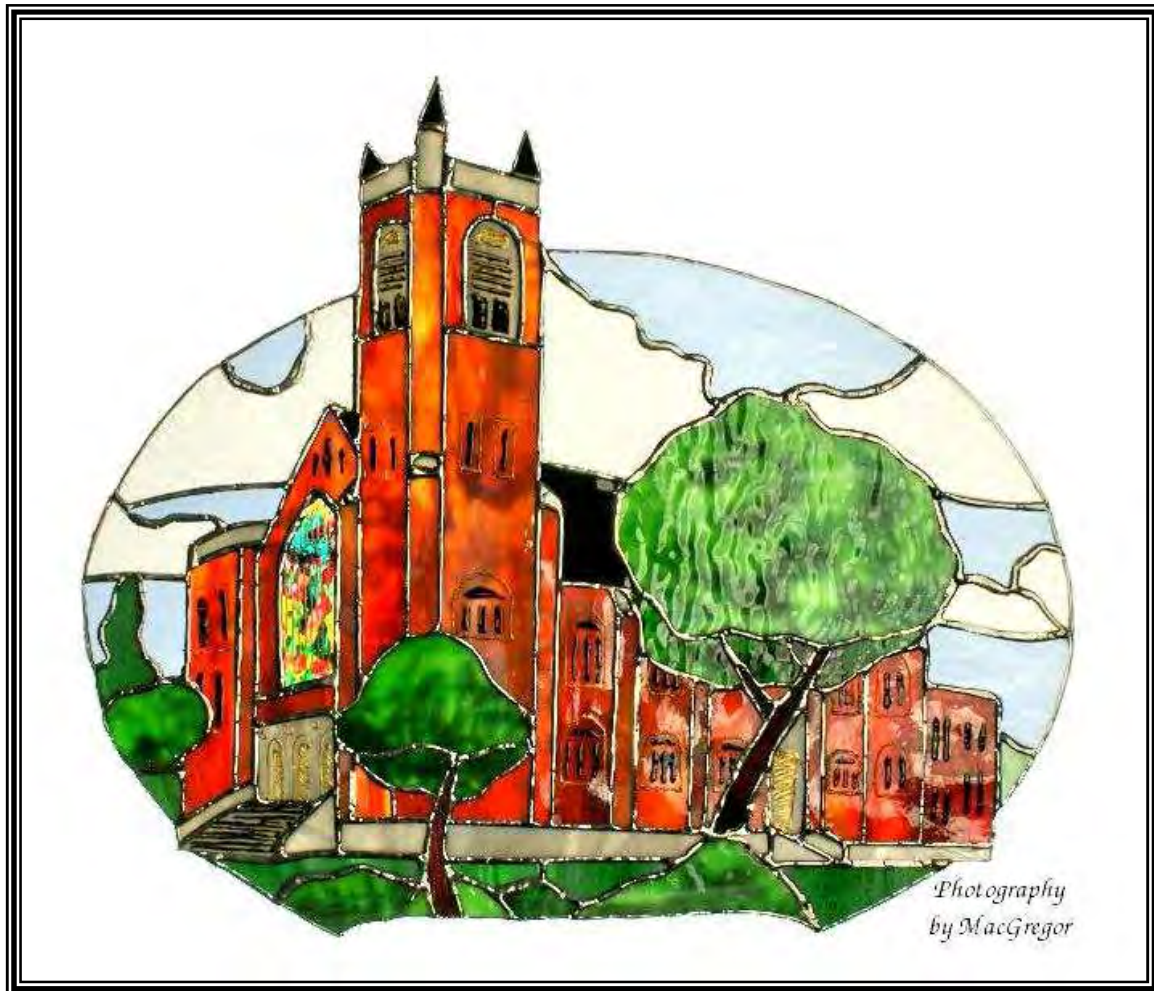


# *First + Metropolitan*

A Centre for Spiritual Growth *and* Active Discipleship

The United Church of Canada



## **Annual Report 2008**

First+Metropolitan United Church  
932 Balmoral Road Victoria BC V8T 1A8  
Phone 250-388-5188 Fax 250-388-5186  
[www.firstmetvictoria.com](http://www.firstmetvictoria.com)

**Content** 2

**Mission Statement and General Information** 3

**In Memoriam**  
Memoriam 4

**Statistical Report**  
Statistics 5

**Council Chair**  
Report from the Chair 6

**Ministerial Staff**  
Rev. Dr. Allan Saunders 7  
Rev. Gordon Cann 8  
Megumi Matsuo Saunders 9,10  
Children and Families 11,12  
Health & Wellness – Ann Maffey 12  
Director of Music—Frances Pollet 13,14

**Epiphany Explorations**  
Epiphany Explorations 15

**Council Executive**  
Finance & Administration 16  
Ministry & Personnel 17  
Property 18

**Ministry Teams**  
Ministry Teams Group 19  
Worship &  
Christian Spiritual Development Team 20  
Pastoral Care Visiting 21  
Pastoral Care & Health & Wellness 22  
Healing Pathways 23  
Hospitality 24  
Newcomers Networking Group 25  
Communications Team 26  
Library Committee 27  
Women Exploring Spirituality 28  
First+Met Flower Committee 28

**Stewardship Campaign**  
Stewardship Campaign Report 29

**Outreach**  
Outreach Core Team 30  
Our Place 31, 32  
Angel Gift 32  
Margaret Cameron Trust Fund 33

**Music**  
Music Committee 34  
First+Met Sanctuary Choir 35  
Pringle Bells 36

**Social Groups**  
Basketball 37  
Badminton 37  
Friendship 38  
The Merry Mates Club 38  
Acti-mets 38

**United Church Women (UCW)**  
Annual Report for UCW 39, 40

**Board of Trustees**  
Trustees Annual Report 41

**Foundation**  
Foundation Report 42

**Support Projects**  
Camp Pringle 43,44  
Campus Ministry at UVic 45  
Gorge View Society 46  
Victoria Presbytery 47



# Mission Statement & General Information

## Our Mission

Our church is a community of people called to love, honour, worship and serve God.

We invite others to share our Christian journey as we prepare to be an effective ministry in our city and in the world.

## Sunday Services

9:00 am Communion in the Chapel  
11:00 am Worship in the Sanctuary  
12:00 pm Congregation Coffee and Fellowship

A variety of alternative worship opportunities including Celtic Vespers, Contemporary Worship and Taize.

## Staff Members

<b>Lead Minister</b>	Allan Saunders	Ext. 226
<b>Pastoral Care &amp; Outreach</b>	Rev Gai Burns (on medical leave)	Ext. 225
<b>Pastoral Care (Interim)</b>	Gordon Cann	Ext. 239
<b>Health &amp; Wellness Director</b>	Ann Maffey	Ext. 233
<b>Director of Music</b>	Frances Pollet	Ext. 231
<b>Children &amp; Family Director</b>	Megumi Matsuo Saunders	Ext. 235
<b>Administrative Assistant</b>	Brian Shields	Ext. 240
<b>Church Manager</b>	Jayne Kirby	Ext. 224
<b>Accounting</b>	Carol Goy	Ext. 223
<b>Administrative Assistant</b>	Sharon MacDonald	Ext. 221
<b>Letting Coordinator</b>	Sharon MacDonald	Ext. 221
<b>Building Supervisor &amp; Senior Custodian</b>	Cullen Morton	Ext. 232
<b>Evening Custodian</b>	Bruce Davies	Ext. 232
<b>P/T Custodians</b>	Edgardo Espanoza	Ext. 232
	Ted Bingham	Ext. 232
	Al Stennes	Ext. 232

## Contact Information

**Church Office: 932 Balmoral Road, Victoria, BC V8T 1A8**

**Phone: 250-388-5188 Fax: 250-388-5186**

**Office Hours: 9:00 am – 12:00 and 1:00 pm – 4:30 pm (Monday thru Friday)**

**E-mail: [sharon@firstmetvictoria.com](mailto:sharon@firstmetvictoria.com)**

# Memoriam 2008

**JANUARY**

SEIFRED, Dorothy Jan 2 Member

**FEBRUARY**

SWINDELLS, Joseph Henry	Feb 12	Adherent	SIMMS, Ross Irving	Feb 13	Member
STRICKLAND, Robert Howard	Feb 12	Inactive Member	CLARK, Ethel	Feb 14	Member
ZAPF, Norman	Feb 14	Member	HUNTER, Robert	Feb 18	Member
McPHEE, Mary	Feb 29	Member			

**MARCH**

MARTIN, Elizabeth	Mar 3	Member
HIND, Reg	Mar 12	Member
GARRISON, Eileen	Mar 13	Member
CAMPBELL, Dr. Joe	Mar 24	Adherent
HUNT, Edna	Mar 31	Newcomer

**APRIL**

COWNDEN, Noah	Apr 9	Child
HADDOCK, Jayna	Apr 13	Non Member
CURRIE, Diane	Apr 19	Member
MAXWELL, Stewart	Apr 22	Member
BETTS, Susan Joan	Apr 29	Non Member

**MAY**

KILGOUR, MariGayl (Lanctot)	May 14	Member
WIRTANEN, Walter Gordon	May 16	Adherent
PORTER, Bernie	May 19	Member

**JUNE**

ISAAC, John June 2 Member

**JULY**

BUCHANAN, (Mrs.) Jessie	July 9	Member
CHATFIELD, (Mrs.) Ruth	July 11	Adherent
AITKEN, Jim	July 20	Member
CUNNINGHAM, David	July 27	Member
FETTERLY, John (Dr.)	July 28	Member

**AUGUST**

MUIR, Evelyn Louise	Aug 10	Member
BYERS, Rose Victoria	Aug 20	Inactive Member

**SEPTEMBER**

DELLER, Bill	Sept 26	Adherent		
McWILLIAMS, Gloria	Sept 29	Inactive Member	BONHAM, Marion	Sept 14
Member				

**OCTOBER**

PORTER, Geraldine	Oct 3	Member	VAN KLEEK, Helen	Oct 25	Member
WRIGHT, Ken	Oct 6	Member	COWAN, Laurie June	Oct 19	Non Member
ROGERS, Harry	Oct 7	Member	WARD, Edna	Oct 12	Adherent
DUTTON, Dianne	Oct 31	Non Member			

**NOVEMBER**

WILLSON, Arthur	Nov ?	Member
WILLIAMSON, Walter A.	Nov 21	Member
TILL, Yvonne Marion	Nov 26	Member

**DECEMBER**

PATTERSON, Margaret Dec 12 Member



I am the resurrection and the life; all who believe in me, though they die, yet shall they live, and whoever lives and believes in me shall never die. (John 11:25, 26)

# Statistical Report for 2008

## Wedding Bells

Kevin John Farris and James Harold Harlick ~ February 23, 2008  
David Tam Namkung and Bethel Lee ~ May 5, 2008  
Neil Lloyd Wilson and GraceCarolynn Nichols ~ May 2, 2008  
Raymond Kam Fai Lau and Xiu Quing Becky Zhang ~ May 24, 2008  
Kurt William Edward Neilson and Sarah Anne Ravensdale ~ July 5, 2008  
Cindi Ann Healey and John Walter Pritchard ~ July 7, 2008  
Caitlin Anna Grace Dove and James Stewart McKeachie ~ July 12, 2008  
Aaron Douglas Springford and Gwendolyn Marie Eadie ~ July 19, 2008  
Scott Russell Heyduk and Erin Rachael Davey ~ July 24, 2008  
Anthony Powell and Michelle Moberg ~ August 2, 2008  
Margaret Rachel Guillen and Michael Edward Silzer ~ August 16, 2008  
Jahna Danielle Pettinger and Stuart Alexander MacKay ~ August 30, 2008  
Jennifer Carson Lewis and Matthew Alexander Batey ~ September 6, 2008  
Trevor Paul Ralph and Ayako Ito ~ November 1, 2008  
Daryll Robert Adair Wilson and Leslie Slova Watson ~ December 28, 2008  
Robert Scott MacQuarrie and Emily Robin Pollet ~ December 28, 2008



## Baptisms

- Hanna Riley Breckon Oliver February 17, 2008
- Evangeline Marion Wagner June 15, 2008
- Faye-Morgan Winnie Bennekou June 29, 2008
- Elodie Grace Bailey Vaudandaine August 10, 2008
- Liberte Kait Bailey Vaudandaine August 10, 2008
- Jeannie Dharma Slamet September 14, 2008
- Ethan Alexander Sherman September 28, 2008
- Graeme John Bolton September 28, 2008
- Clara Helena Bolton September 28, 2008
- Mika Ashili Davis December 7, 2008

## Transfer of Membership

Outgoing: 1

## REPORT FROM THE CHAIR OF COUNCIL EXECUTIVE

Chair	Linden Holmen
Members	Moira Nasim, Co-Chair of Ministry; Barry Rolston, Co-Chair of Ministry, Peter Van Es, Chair of Finance and Administration; Don Beamish, Chair of the Property; Rennie Warburton, Chair of Ministry and Personnel; Jan Drent, Chair of the Trustees; Allan Saunders, Ex-officio member; Ellie Jansen, Recording Secretary
Meeting details	Meetings were held once per month, every third Tuesday afternoon. In addition, some special meetings were held. All members of Council Executive generally attended all scheduled and special meetings.

### Highlights of the Year

The Council Executive has had a challenging year in 2008. Some of the main issues it has dealt with and continues to work on are outlined below:

- **Volunteer and staffing issues:** Our Church has a broad and active agenda, which is commendable. This has created difficulties to find enough volunteers to serve in leadership positions and has resulted in heavy work loads for some volunteers. In addition, ministerial staff shortages have resulted in additional work loads for the remaining ministerial staff.
- **Operational and administrative issues:** The Church has had and still has problems with its computer systems which reduce productivity of ministerial and non-ministerial staff, and add frustration to their work experience. Some administrative loads have increased due to new financial reporting requirements.
- **Financial issues:** The main financial issue facing the Church is its financial viability. In recent years, the trend has been for a decrease in regular givings and increases in costs. This situation has been manageable for the past two years due to the financial support provided by funds raised through the Stewardship Campaign. However, 2009 is the last year of the Campaign and the Church must develop a plan to respond after it.

In spite of difficulties, First†Metropolitan continues to offer a broad range of vibrant programs and services which serve its mission and help to achieve its role as a centre for spiritual growth and active discipleship.

As Chair of the Council Executive, I want to express my gratitude and respect to my colleagues on Council Executive and to all team leaders on Council who have contributed their talents and efforts this past year. I trust that we will work together to meet the challenges in 2009 and beyond.

Linden Holmen, Chair

## LEAD MINISTER'S REPORT - Dr. Allan Saunders

What value would you place upon the life and mission of our First+Metropolitan community and your place within it? Do we offer something of real worth for the people of Greater Victoria? Ross Bartlett makes the following statement about Christ's church in general – a statement that I believe applies to a congregation such as ours:

- ✓ *In an increasingly big world, the church remains a place of intimacy.*
- ✓ *In an increasingly disconnected world, the church continues to nurture relationships.*
- ✓ *In a grasping world, the church remains generous.*
- ✓ *In an unsettled world, the church remains an anchor.*
- ✓ *In Jesus, we do not meet a presentation of abstract ideas about God, life, humanity.*
- ✓ *Instead, we encounter a person who invites us to join up, with others who have heard the invitation and to build a community that reflects the vision Jesus holds for us and for the world.*

In 2008, First+Metropolitan continued to provide meaningful worship, inspiring music, a rich range of learning opportunities for all ages, support and pastoral care for numerous individuals and households, and extensive outreach ministries.

Some unique highlights of the year include a sold-out Epiphany Explorations Conference, the publishing of *Stories United*, and the running of a Vacation Bible Day Camp at Bella Coola. Many other worthwhile activities are highlighted in the following pages.

We have benefited from the participation of so many in assisting with our various programs and other aspects of congregational life and work. However, like most churches, we would benefit from the involvement of others to help ease the load for some of our core leadership.

Thanks to the Stewardship campaign, we could meet our expenses in 2008. However, our Council Executive is alerting us to major financial challenges in the next 1 – 3 years, and we already have done some significant cutting back for 2009. Addressing this issue will be a top priority for the immediate future, and some hopeful initiatives are being put into place.

We also are grateful that the frequent disruptions of our church computer system that have occurred over the past couple of months are being addressed.

My church responsibilities beyond the congregation this year included being a member of the planning team for a successful national conference on ministry within the Canadian context held in Toronto in June. I also am serving a one-year term as Chair of Victoria Presbytery, which began last May. A personal highlight this year was taking part in a Pastors Pilgrimage to the Holy Land (thanks to the Interdenominational Theological Center, Atlanta).

We are blessed with a fine combination of volunteer leaders and willing staff – and they really do make such a difference in many lives, including my own. Our congregation has been well-served by Linden Holmen, our able and dedicated Chair of Council. Thank-you to Rev. Gordon Cann and Ann Maffey who have gone "the second mile" since we became short-staffed at the end of September. We are blessed with a fine combination of volunteer leaders and willing staff (including Fran, Megumi, Sharon, Jayne, Carol, Brian, Cullen, Bruce). Our prayers continue for restored health for Rev. Gai Burns.

As we move forward through 2009, may we all join together at First+Metropolitan in seeking to be a vital centre for spiritual growth and active discipleship.

Rev. Dr. Allan Saunders

**From the desk of Gordon Cann –**

I am finishing the year the way I started it: being employed half time (20 hours) in the Pastoral Care Ministry. While I was looking forward to working quarter time, in reality it didn't last very long. I can't say that this has upset me because my position at First†Met is very satisfying and I enjoy it tremendously. I am especially fond of our senior members. They have such amazing energy, great faith, a special sense of humour, astounding honesty, and wonderful stories.

One of the great benefits of being on staff this year was that I was the staff person assigned to the Spiritual Companions program. This meant that I saw *Stories United* become a reality. Being part of the Editorial Team I can testify to the amount of time, talent and energy given by Terry Dance-Bennink and her crew. On the Dedication Sunday we witnessed a miracle when Madge Struthers, who had been close to death during the summer, arrived for the service. Madge is a real example of how the spirit can rule over the body. I suspect that same spirit is a constant companion of most of our seniors. I often feel I am stepping on holy ground when I am privileged to visit them.

The Summer Strollers Program was another delightful experience. I was able to have some very meaningful visits as we strolled along the Willows Beach. Even the cool windy days were warmed by their smiles, their greetings and their expressions of appreciation of being able to take that stroll.

In April I moved from the second minister's office to sit across from Ann Maffey. The sun pours in most mornings and sharing space with Ann is a very special experience. We share so much in ministry and compliment each other's work. We are very much a team. Unfortunately, Gai Burns has not been able to occupy that office much nor carry out her plans for ministry. She remains in our prayers, personal and corporate.

I was the assistant to a lead minister for nine years and the lead minister for 13 years and these experiences have helped shape the relationship I have with our lead minister, Allan Saunders. It is one of rare collegiality and it is a very affirming relationship for me. Also part of the ministry team is Fran Pollett who is so faithful, so talented and so supportive of much that happens at First†Met. Megumi's energy and her special ministry to children, youth and families are very much admired but it is her wisdom and common sense in ministry that I treasure. Brian Shields is an extraordinary resource person whose support is given without stinting and with good humour. The dedication, the resourcefulness, the good humour and sincerity of Sharon, Cullen, Bruce, Carol and Jayne enhances and supports most things that happen. We are truly blessed.

We are also truly blessed with the dedication and gracious support of so many lay people who in many cases have been contributing talent, time and other gifts for many years and they really are the "church in action." I will mention only four people who have given extraordinary support to my ministry: Patti Buchanan, Chair of the Pastoral Care Team, Shirley Chatfield and Helen Mackay who keep the membership list up to date and Shirley Bardy who has gone the second mile to help me when I have lead and celebrated at the 9.00 am Chapel Service.

I look forward to the coming year as I share in this ministry which is ours and God's. Thank you for offering me such a rare and blessed opportunity.

Yours in Christ, Rev. Gordon Cann

## Children, Youth, Young Adult & Family Ministry Megumi Matsuo Saunders (Year 2008)

We had another great year. God's blessings continue to be upon us with wonderful children, parents, grandparents and volunteers, who make this ministry most meaningful. First†Met is a home for many people, even if they are absent from time to time. We have overcome the myth of no children in downtown churches. Indeed, we have very lively children every Sunday. What a joy to accompany youth, who have grown up with this First†Met community now much taller and matured and many parents, who try hard to raise children and try hard to enrich their own relationship with partners and family members in faith. We also welcomed young vibrant youth leaders Dara Shetty, Sarah Wyatt, Emma Prestwich, David Namkung, Bethel Lee this fall.

### Highlights for 2008:

**The Sunday School** ~ Regular Sunday School 2<sup>nd</sup> Sunday of Sept to 2<sup>nd</sup> Sunday of June  
Summer Sunday School; during the summer  
Sunday School finishes at 12:15 pm except Toddlers

**Curriculum** ~ "Power Express" rotation model curriculum for Grade 1 to Grade 6 (2008 June). K to G5 (2008-09). Zacchaeus, The Lord's Supper, Mary Magdalene, Empire, Martha & Mary, and Good News were the themes of 2008. "Seasons of Spirit" for Toddlers and Youth class. They have been exciting Sunday School classes and in 2009 these programs will continue.

**Epiphany Explorations** ~ Youth participated in Kate Hutchinson's session and had an extra gathering with Kate.

**Meg Hickling Workshop** ~ Sexual Health Education for Families (from 3 years old to youth) has become our annual event. This year an older youth (13- 17 yr) session was added. About 150 families - 450 people attended Meg's workshops.

**Mardi Gras** ~ Fun-filled activities, hotdogs, & ice-cream lunch, mask-making and parade, cupcake decorating, fishpond, and face painting. Special thank you to Joan Wilkinson for coordinating.

**Lenten Project** ~ Supporting UCC mission theme Care for Creation. This Lenten project raised \$10,000 for World Development and Relief (part of the Mission and Service Fund).

**Family Fun & Faith Friday Potluck** ~ We are hams & jams for sandwich generation. How to care for our aging parents while looking after young ones series continued. In the Fall we had a family games night and movie session.

**Mothers Morning Out** ~ The eighth year that mothers and their preschool children have taken part in this program. New generation of mothers and children joined this year. Alumni members join Annual Cookie Bee for UCW for Advent service. Thanks to child-care volunteers: Gloria Stott, Joyce Clugston, Joan Wilkinson.

**Maundy Thursday** ~ Youth took part in this Seder and Tennebrae service.

**Easter** ~ The youth class and children took part in our celebration of that day.

**Great Parade—This is the Ninth year** ~ Children, Youth oriented service "Empire and Children theme" including stories from the Bible, raps, justice issues were shared by Sunday School classes.

**Congregational Camp at Camp Pringle** ~ The sixth annual weekend First+Met family camp. Over 125 people joined this camp. Amazing races and low ropes were added this year. Elaine Reedhead's cooking leadership has been a big support. In 2009, the camp will be on June 26 - 28.

**Summer Vacation Bible Day Camp** ~ Held in August for 2 weeks from 9:30 to 3:00 pm for 5 days a week, led by Madelaine Hittos and volunteers. We had 32 children & youth involved in this camp. Themes were Rain Forest Adventure & Beach Party. Youth leaders were Sarah Prestwich, Matthew Fraser, Sarah Glover, Ryan Blakely, Eric Vila, Samantha Jones, Madeline Lenz, Sydney Lush and a Korean student Min Kim. Thanks to the snack team: Irene Baddeley, Patti Buchanan, Irene Bevan, Gloria Stott, Elaine Reedhead, Evelyn Moroz and Eleanor Roberts.

**Camp Pringle Summer Camp** ~ UCW and individual donations made it possible for 6 children to attend Camp Pringle this spring & summer.

**Summer Sunday School** ~ Many volunteer parents taught Sunday School for the whole summer.

**Rally Sunday** ~ Was a time to welcome back children for the covenanting service of Sunday School.

**Sunday School Party** ~ Luncheon and a special magic show to celebrate a new season of Sunday School.

**Youth group** ~ Gonzalo Duarte led Youth Sunday School (G8 and up) and Youth Group activities until June. In the Fall new teams of youth leaders (Dara Shutty, Sarah Wyatt, Emma Prestwich, David Namkung, Bethel Lee) started new fresh activities and led Sunday School G4 to G12.

**Mid Week Programs** ~ Junior Chess Club, Kids sports with Mike Witt, (until May), Junior Choir with Carolyn Howe (and Music team).

**Naramata Youth Event:**

- Matthew Fraser attended the Senior Youth Conference.
- BC Conference: Children at Conference - Madeline Lenz attended.
- BC Conference Youth - Matthew Fraser was chosen to attend.

**Bella Coola Mission** ~ In July, Vacation Bible Day Camp was held in Bella Coola United Church where our candidate Rob Smith was the minister. It was a meaningful mission opportunity. Amanda Biederman, Sarah Prestwich, Jordan White, Matthew Fraser along with Jan White, Allan Saunders and Megumi Matsuo Saunders led this worthwhile project. After the mission, this project was highlighted at the worship service.

**Children's Sunday** ~ Focused on "We hold children" and other children's rights. Posters & bulletin art, were created by Sunday School children.

**Advent Event** ~ Heritage (international) finger food and children's craft - nativity scenes as the first Christmas decoration for many families.

**Congregational Advent Turkey Dinner** ~ Youth from grades 4 to 12 and their parents undertook this dinner for the first time. It was a great success. We netted \$1800 dollars which was shared with M & S and Youth ministries. Special Thank you to Irene Baddeley for her great help.

**December 6 Service** ~ Charleyne-Thornton-Joe was the speaker for our interfaith service for the National Day of Action on Violence Against Women.

**White Gift Service** ~ It is an annual highlight of Christmas. However, this year's snowstorm prevented many children from participating. Still, it became a meaningful and intimate experience. Canned goods were distributed to seniors at Balmoral, who could not go shopping because of the weather.

**Christmas Eve Family Service** ~ This was our eighth year of offering an early service (4:30 pm) keeping families with young children in mind. Over 350 people attended despite bad weather. Mary Byrne led the service along with Allan, Dara Shutty, Emma Prestwich, Todd Glover, Matthew Fraser, and Jordan White. PowerPoint visuals, carols and candlelight worked very well again. No Animals this year because of the bad weather. Every year, we have one of our youngest congregation members be Baby Jesus! This year the child was Ethan Sherman. An offering of approximately \$1400 was received.

**Christmas Eve 11:00 pm Service** ~ This was a first time more meditative chapel service with scripture and carols organized with some young adults. Thanks to Jack Boomer for accompanying on the piano.

**Young Adults** ~ In late August we noticed a number of young adults were attending worship and since then have offered a number of "after service" gatherings for them.

**Youth leaders** ~ In June the extensive survey and interviews among parents and youth were taken to determine the needs of youth activities by the committee headed up by Jan White, assisted by Irene Baddeley. From these results, to nurture youth, Grades 4 to 12, Todd Glover and Sandra Hudson joined Jan White to select new youth leaders. Dara Shutty - G4+G5, Emma Prestwich & Sarah Wyatt G6 - G8, David Namkung & Bethel Lee G9 - G12 were selected.

**Min Kim** ~ We are very sorry to hear of the death of our good friend Min in December in Dubai from a car accident. Min was a Korean student who helped with our Congregational Family Camp & Vacation Bible Day Camp and an "adopted" member of the Reedhead family in Canada.

For myself, I have enjoyed this year very much, especially preparing for Sunday morning children's time where all generations of the congregation can come together with children. This always involves deep prayer and asking God's spirit to work through me. To work with the Children, Youth, Young Adults, Families and all the leaders and helpers is a privilege and excites me as to how we can do God's mission together. I appreciate very much all the support the First+Met congregation has given to me.

**Continuing Education:**

- Western Christian Educator's Conference (Reno)

**Broader church and community involvement:**

- BC Conference: Education & Students Committee
- National Church: Global Partnership Advisory Committee (GPAC in JGER)
- National Church: "Empire" Animation Working Group - resource for children
- National Church: Ministry in the Canadian Context Conference - led a workshop

- Emmanuel College in Toronto: Gave workshop on "Children's Ministry"
- Ecumenical: President - Women's Inter-Church Council of Canada
- Victoria: Balmoral Housing Board

My work at First†Metropolitan is  $\frac{3}{4}$  time position, allowing me time to pursue these other activities.

My thanks to the faithful **Sunday School Teachers, volunteers and parents.** They are: Micia Kanstrup, Jan White, Noel Lonsdale, Cheryl Taylor, Mary Jean Krawciw, Lorna Pritchard, Joan Wilkinson, Imogen Glover, Lucy Mears, Amanda Biederman, Leslie Biederman, Pat & Ross MacKinnon, Candice DiGesio, Hayley Henderson, Janice Drent, Leanne Prestwich, Don Krawciw, Gloria Stott, Linda Rodger, Irene Bevan, Meadow Dykes, Kat Rainsberry, Leanne Vowles-Tuey, Janet Harper, Andrew Faulkner, Cathy Baker, Ruby Lightbody, Mary Byrne, Andy & Andrea Swan, Todd Glover, Elaine Reedhead, Shelley Servais, Evelyn Moroz, Irene Baddeley, Kathy Cook, Lynn Brochu, Joyce Clugston, Edeana Malcolm, Maryanne Oxamitny. Sound and Visuals ~ Helen MacKay, Jim Anderson, Jane Louie and others. **Advisory Committee Members:** Irene Baddeley, Cathy Baker, Leanne Prestwich, Jan Drent, Lynn Brochu, Paul Longley, Matthew Fraser and Andrew Faulkner and new chair Jan White, who has brought wisdom, commitment and action to her position as Chair of this committee.

Thanks to the special helpers ~ Elaine Reedhead, Evelyn Moroz, Shelley Servais, Lorie & Warren Stirling, Barry & Janet Jenner, Irene & Dick Bevan for their regular support for special luncheons. Jean Jenkins for special projects and bulletin board decoration. My thanks to all the adults who have shown keen interest in our ministry and groups: Merry Mates, Acti-Mets and the Friendship Group for your financial and spiritual support. Special Thank-you to the UCW for their ongoing support to this ministry for both spiritually and financially - it is very much appreciated. Co-presidents-Joan Dowse and Marie McKee continued to be our great enthusiasts.

Many thanks to the staff - Cullen, Bruce, Sharon, Jayne, Carol, Candace, Fran, Ann, Gordon, Gonzalo, Gai, Brian and part-time custodial staff, all who took different parts in helping and supporting this ministry. Thanks, Brian for all the support for audiovisual and other technology and Allan, for your support of this ministry with guitar music, technological help, helpful counsel, giving us your full encouragement.

Submitted by: Megumi Matsuo Saunders

### **Greetings from Northern Ireland**

It is very hard to believe that this is the eight Annual Report which I have prepared for the Health and Wellness Ministry Team.

I am very grateful for the support of Dr. Andy Swan throughout the year and also for the many volunteers and program participants who make this the vital ministry that it is.

As I prepare this report at the beginning of 2009 I am learning first hand, what it is to be a caregiver around the clock. It is stressful, certainly, but it is also a privilege to be taken into the confidence of my parents, and to assist them to find necessary community supports that will enable them to continue living in their home.

Blessings to all of you who have been and continue to be caregivers to your loved ones.

Submitted by: Ann Maffey (Parish Nurse)

## Director of Music Report 2008

Another year has flown by: choirs have gathered, rehearsed and presented; workshops have transpired; pageants have been produced; praises and prayers to our Creator have been lifted in song!

Carols in the Candlelight Christmas Pageant is a huge focus for us from October on. This year we actually had less time available to work on the planning, as our principal directors were not available until mid-November! Nonetheless, we were perhaps more efficient, and tried to get costume designs and production details completed quickly. The story chosen for dramatic production was that of Oscar Wilde's *The Happy Prince*, a beloved children's tale. Again, we gathered forces from the church and broader community to create an inspiring, art-filled presentation. A favourite moment for me was of the choir singing the *Huron Carol* with interjections of the beloved hymn song *Blessed Are They*, as Karun Thanjavur coursed through the church blessing the congregation with the spoken words of the Beatitudes, followed by a flock of "birds" (children in bright costumes) not to mention assorted live animals.

We note that about 1000 people attended the two presentations; however, the offering was small - about \$2200. Perhaps we should list a suggested donation amount. Attendees are mainly from the broader community and will want to know of the realities of church giving, budgeting, and outreach.

Many thanks to our directors: Britt Small (stage director), Sydney Sparling (movement and choreography), Mona McGill (costume design) assisted by Wendy Meilleur, and Helen Mackay, sound. So many people are part of this presentation: about 80 souls volunteer from hospitality, costuming, makeup, technology, to ushering; a further 20 are involved in the acting; and another 25 in the Sanctuary Choir. We are very grateful for their work at such a busy time of year, and humbled by the responsibility of conveying to the Victoria community the timelessness of the Christmas story.

An initiative this year has been the development of the Contemporary Sabbath Service. This is funded through the Stewardship and Christian Spiritual Development programs of the church. We realized very quickly early in the year that we have been gifted with the attendance of UVic music students such as Jeff Poynter and Amy Collins, and Sarah Wyatt. They were leaders in their own UC congregations prior to arriving in Victoria, and it is wonderful that they are mustered here and contribute so much to the Music and Children & Youth ministries. Do make a point of attending a Contemporary Sabbath service, the last of which is this April 5<sup>th</sup>. You will be amazed with the gifts of song and spirituality.

This year we suffered a huge loss with the passing of Diane Currie. She participated so fully in the life of the congregation. There was a time where everywhere I turned in First+Met, I found reminders of her love of this faith community - Crown of Thorns for Easter carefully created over the course of a year, with the branches carefully woven in their infancy to grow into a chosen shape, flower arrangement holders, choir book marks, pageant costumes, special decorations for the many music and UCW events and so forth. What a legacy! We also felt the loss of Ivy Rogers' husband, Harry. He was always there to lend support to music functions and worship services over many years. The Music Team is grateful that both of these people arranged to be remembered with memorial donations designated to the Music (Trust) Fund. This is a way to ensure that the program that they loved continues to flourish.

Events in 2008 such as the Snowbirds and Seagulls, One-Woman Cabaret with Rebecca Lenz, the fabulous *An Afternoon with Sir James Douglas*, drum workshops – all help to raise resources (not to mention visibility) for the music program.

Financially, the church council has asked the Music Team – and other teams – to raise monies towards the support of its budget. We are pleased to announce that the Team has raised almost half of the total music budget (music supplies, Sanctuary Choir, Pringle Bells, Bursary Program, instrumentalists at Easter, and so forth). This is a huge commitment on the part of the Music Team, and means that they are very busy realizing this goal. We also thank the congregation members for special donations to Music.

This next year we look forward to a special event: a memorial concert *Shall We Gather at the River?* This will provide an opportunity to remember loved ones as we sing favourite anthems and hymns.

A comment about Sunday worship singing – please do your part to keep congregational song alive in our congregation. We need to sing with body, mind and spirit, being conscious that it is in this act that we celebrate the presence of God. I wonder if the congregation is doing its best. Please do not off-load the singing responsibility to the choir. We ALL need to lift our voices! I will endeavour to introduce newer songs in the prelude time to help with this.

I conclude with this admonition from John Wesley, Directions for Singing from 1761: *“Sing lustily and with a good courage. Beware of singing as if you were half dead, or half asleep; but lift up your voice with strength. Be no more afraid of your voice now, nor more ashamed of its being heard, than when you sung (secular) songs. ..Strive to unite your voices together, so as to make one clear melodious sound”.* (Quoted in **Voices United** p 720.)

I cannot resist recalling another memory of the year: it is that of our daughter Emily's late December marriage to Robb Macquarrie: a photo of the young couple having just recessed out to the Quadra Street sidewalk. There they are in their wedding finery looking back up the church stairs, through the ceremonial Guard of Honour, into the still-open doors of the church ~ heads tilted back and laughing in delight.



Thank you to a caring church and ministerial team that have been part of our lives through baptism to marriage, and whatever is to come!

Submitted by: Fran Pollet (Music Director)

## Epiphany Explorations 2008

- Team Leader/Chair:** Joan Mason
- Meeting Days:** Jan. 6, Jan. 11 (Registration Stuffing party), Mar. 13, May 22, July 25 (brochure stuffing party), Nov. 5, Nov. 26
- Present Membership:** Moira Nasim (Past Chair & Billeting) Jim Anderson and Helen Mackay (Sound and Taping), Irene Baddeley (Secretary and Registration), Beverley Cattrall (Hosting), Penny Bond (Brochure), Joyce Clugston (Prayers), Diane Keating (Information Desk\*), Vanessa Hammond (Information Desk), Sylvia Purdon and Jonathan Down (Presenter Arrangements), Ed Oxamitny (Hospitality), Brian Shields and Maureen Shields (Registrars), Jane Louie (Technical), Dave Osmond (Billeting\*), Joyalle Bunyan-Maynard (Vendor Tables), Elizabeth Thierry (Bus Tour Lunches/Volunteer Lunches), Allan Saunders and Ann Maffey (staff partners), David Bray and Shelley Servais (Media Relations), Sue Lawson (Special Needs). (\*team members who resigned following the March meeting.)
- Meeting Time:** usually evening, 7:00 to 9:00 pm
- Number of meetings:** 5 plus 2 work parties
- Average attendance:** 12 -15



### Highlights/Achievements of the Year:

The 6<sup>th</sup> annual Epiphany Explorations Conference was held January 17-21, 2008 and featured speakers John Dominic Crossan, Marcus Borg, John Bell, MT Winter, Katy Hutchison, the Open Door Choir, and Meg Hickling among others. Attendance was at an all-time high of 575 full-time participants plus another 100 registered for the five Borg/Crossan sessions. The conference resulted in a substantial contribution to the revenues of the church of over \$83,000.

Many procedures were modified in order to meet the needs of the capacity crowd including rental portable washrooms and adding refreshment service in Room 200. We were extremely fortunate that the weather cooperated, as the crowding would have been much more difficult to deal with had we encountered snow or heavy rain. Evaluations for the event were very positive, with numerous participants rating the conference as the best-ever and the must-do continuing education event of the year.

Some feedback suggesting that the event was too big and/or should not get larger, resulting in a decision to cap full-time registration for the 2009 conference at 500.

Planning for the 2009 conference is being finalized as of this report. For a number of reasons including the current economic crisis, attendance is lower, with approximately 350 full-time registrations and another 400 individual ticket purchases. The conference features Stephen Lewis, Ted Hughes, Alex and Nella Nelson, Mary Ellen Turpel-Lafond, Rita Nakashima Brock, Nancy Reeves, Thomas Long, David Wilson, and our own Terry Dance-Bennink and the Spiritual Companions group. Our online registration system has permitted us to send reminders to our past participants, helping to promote the conference at minimal cost.

Many thanks for the contributions and hard work of our dedicated staff, planning team members and the hundreds of church volunteers who make this conference a blessing to all, setting a high standard of program offerings and hospitality.

### Objectives for Coming Year:

- ✓ To review our pricing and budgeting for the event to more accurately reflect the impact of the conference on staff and volunteer time.
- ✓ To review our volunteer recruitment strategies and find a more effective means of contacting potential volunteers.
- ✓ To continue to offer a program that is spiritually inspiring for clergy and laity in the United Church and other denominations, our own congregation members, snowbirds, newcomers and the general public.

Submitted by: Joan Mason (Chair)



## Annual Report of the Ministry and Personnel Committee for 2008

**Members of the Committee:** Rennie Warburton (Chair).  
Arlene Anderson, Jack Boomer, Cyndi Frame,  
Jane Louie, Karen Thompson

Our Committee faced a number of challenges this past year as we sought to balance our duties of overseeing, evaluating and consulting with staff and liaising between staff and congregation.

As usual performance reviews took up the greatest amount of our time. The process involved requesting names from staff members of people whom they considered able to give an impartial assessment of their performance, choosing names ourselves of similarly qualified people, selecting from both lists potential members of focus groups, contacting those selected to ensure their availability on a chosen date, conducting the focus group discussions, interviewing each staff member, and finally writing a letter to each one summarizing the outcome of the review. We completed the process by the end of June. Nearly all staff were complimented on an outstanding review.

- Council Executive accepted our recommendation that Ann Maffey be reappointed Co-ordinator of Health and Wellness and her appointment was approved by Presbytery.
- In May four of us attended and benefitted from a workshop at Duncan United Church which addressed the duties and operations of Ministry and Personnel Committees.
- In June, Gonzalo Duarte concluded his time with us in youth ministry, and in September we welcomed Emma Prestwich, Sarah Wyatt, Dara Shutty, Dave Namkung and Bethel Lee as a new team of youth workers. Candace Bouchier also concluded her part time work in the church office in November.
- We began the process of updating job descriptions, completed some and are still working on others.
- We supported Rev. Gai Burn's application for sick leave and applied on behalf of First†Met for reimbursement of a large part of her salary during her leave. In order to cover some of Gai's work, we recommended to Council Executive that Rev. Gordon Cann's appointment be moved from quarter-time to half - time.
- In October the committee planned a team building session and held a retreat for ministerial staff at which a number of pressing issues were also discussed.
- Our Chair participated regularly in Council and Council Executive meetings, assisted in the process to appoint three youth workers, and advised the committee planning the 2009 budget.

Submitted by: Rennie Warburton (Chair)

## **Property Report to Management for the Year Ending 2008**

**Chair:** Don Beamish

**Committee Members:** John Newhouse, Chris Rainsberry, Barry Snowdon

**Staff Support:** Allan Saunders, Cullen Morton

### **Highlights/Achievements of the Year**

#### **List of projects completed in 2008**

- Enhanced Audio/Visual and electronic information systems including network, software and hardware upgrades and acquisitions
- Renovations to several rooms and offices to meet program demands
- Relocation of the bike racks with paving of the Balmoral parking lot
- Replacement and relocating of fencing along the north side of the Sanctuary
- Refreshed Landscaping to minimize maintenance and watering
- Maintenance repairs and upgrades to comply with current standards
- Purchase of E-efficient lights/ballasts to minimize electrical costs
- Commitment to Environmental Consultant for Energy Audit process

#### **Objectives for the Coming Year**

- Installation of the E-efficient lights/ballasts and implementation of various Consultant recommendations for Energy savings
- Maintenance and Weatherproofing of the Building Envelope
- Development and prioritization of 'shelf' projects for the coming years

Submitted by: Don Beamish – Chair, Properties Committee

## Ministry Teams Group—Annual Report 2009

**Team Leaders:** Barry Rolston & Moira Nasim

**Staff Partner:** Allan Saunders

**Membership:** All the 'Leaders' of the various Ministry Teams: Archives & Heritage, Children, Youth, Young Adults & Families, Christian Spiritual Development/Worship, Communications, Epiphany, Health & Wellness/Pastoral Care, Hospitality, Library, Music, Newcomers Welcoming Network, Outreach & UCW.

**Meeting Day & Time:** While no specific meeting dates were scheduled this past year, time during our quarterly Council Meetings has been set aside to share our ministry goals, hopes & concerns. Specific requests & concerns of teams have been brought forward & addressed at our regular monthly Council Executive Meetings.

### Highlights of the Year:

- Ongoing sharing of concerns/hopes/goals from the various teams at quarterly Council Meetings
- Monthly representation at Council Executive Meetings to address Ministry Team concerns/hopes/goals
- Visit by the Co-Chairs to various teams' meetings to better understand, encourage & support the different ministries of these teams
- Participation in Budget Committee meetings to support respective Ministry Teams' financial needs and present the final budget to Council Executive & Council
- Participation in the Nominating Committee in preparation for the AGM
- Participation & Leadership in Team Leader's Orientation/Presbytery sponsored events
- Helping teams where necessary: e.g., Hospitality on Sundays after church, etc.

### Objectives for the Coming Year:

As *communication* among the various Ministry teams and other Committees in the church is a primary focus as well as an ongoing concern of the Ministry Teams' mandate, we continue to explore better ways of communicating with each other at First+Metropolitan.

To facilitate this, participation in many of the activities highlighted above will be ongoing. Other objectives under review in 2009 will depend on those particular issues that are brought forth by the leaders of the various teams.

We are indeed most fortunate to have the active commitment of so many persons, making possible the diverse ministries and programs within this congregation. We offer our deepest gratitude to each and every volunteer.

Respectfully submitted: Moira Nasim & Barry Rolston.

## **Worship – Christian Spiritual Development Team**

Team Leader:	Leanne Prestwich
Meeting Days:	varies
Meeting Time:	7 pm
# of meetings	held: 4-5
Average attendance:	6-10
Present Membership:	Leanne Prestwich (chair), Cyndi Frame (secretary), Joyce Clugston, Nancy Leal, Edeana Malcolm, Marie Warner, Hanne Fair, Jonathan Down, Barry Rolston (Ministry Team rep), Rev Dr Allan Saunders (staff rep).

### **Highlights/Achievements of the Year:**

1. Amalgamation of Worship & Christian Spiritual Development Teams in beginning of 2008.
2. Revision of wedding and memorial fees.
3. Evaluation of worship services survey – team reviewed the feedback from randomly selected people in the congregation over a series of Sunday 11 am services this fall.
4. Scripture readers – Edeana Malcolm updated the readers list and held 2 scripture readers workshops to provide guidance on public speaking. After discussions, the team decided to recommend that readers try to use the Revised Standard Version of the bible for its more inclusive language.
5. Communion – Marie Warner organizes the 4-5 Communion services per year (9 am service attendees organize the January service during Epiphany Explorations).
6. Order of Service/bulletins – due to significant increases in paper and printing costs, the team discussed methods to decrease the amount of inserts/size of the bulletins by including more announcements in the monthly newsletters, online, and changing format to have announcements all on one page.
7. Ongoing Christian Spiritual Development events (Jack Larson, Colleen Erb's Women's Spirituality group, Tim Scorer's spring sessions, Linda Mulhall's Listening Heart sessions, Sue Clough's Pilgrim Heart sessions) and New events (Allan Saunders' Passport to the Holy Land displays and slideshow presentations, Men's Gatherings)
8. Special worship services (Christmas, Easter, etc) – ongoing support and feedback provided to ministerial team.

### **Objectives for Coming Year:**

1. New Contemporary Sabbath Worship service—exciting new service, lead by young adults, offers wide variety of music and word. Held on 1<sup>st</sup> Sunday of each month at 7 pm
2. Evaluation of Worship services surveys – continue to do these surveys in Spring/09, collect feedback and bring ideas to the team and congregation
3. Men's Gathering – explore and support expansion of these events
4. Continue to provide support to ongoing Christian Spiritual Development events

Submitted by: Leanne Prestwich (Chair)

### **Pastoral Care Visiting**

Coordination of pastoral visits is the responsibility of the Pastoral Care and Health and Wellness Team. At team meetings we review the visits made by our staff and our lay visitors from the Spiritual Companions program. We also have a list of people needing visits. However, we have some concern that folks may be missed because we simply do not know about their need or where they are.

Gordon Cann, the visiting Pastor and Ann Maffey the Director of Health and Wellness work together planning visits to folks in their homes, or in hospital and senior's residences. This ensures that as many people as possible requiring visits are seen on a timely basis. Between them they make on average 25 visits each per month. The Spiritual Companions lay visiting program that was started last year provides for ongoing visits to the elders by their spiritual companions. Currently this means that 15 elders are visited regularly approximately 2 times each month. Gordon Cann and Blain Thierry take communion to people who can't get out to Church, and this has been as many as 5 in a month.

Keeping informed about the location of some of our seniors can be a challenge. Two of our members, Shirley Chatfield and Helen Mackay maintain a visitation list of approximately 75 Church Members. Sometimes this is a difficult task in that some folks move into hospital and then into a facility. Confidentiality of the Health Care system often means that unless you know a family member you cannot get the information about where someone has been placed.

We know that many groups in our Church Family such as UCW Units provide connection and support for their members and within our congregation there is support and care between friends. We have in effect, a Circle of Care such that everyone should be able to feel connected. It is that goal that urges the Team to reach out and ask each and every one of you to be aware of the need of people around you and to help ensure that pastoral care needs are met. You can help by letting us know if someone you know needs a visit or has moved to a facility or is in hospital. You can call and leave a name with Gordon Cann, or Patti Buchanan. You can let Shirley Chatfield know if someone you know has moved. There is a Pastoral Care file in the mail slots across from the office. If you have any ideas we would love to see them written down and tucked into that mail slot. We meet on the second Monday of each month and if you would like to come to a meeting and bring your ideas just call Patti at 250-479-6438 and we will welcome your participation. Working together we can make sure that the Circle of Care is complete.

Submitted by: Patti Buchanan (Chair, Pastoral Care)

## Pastoral Care & Health and Wellness Team Annual Report for 2008

**Chair:** Patti Buchanan  
**Present Membership:** Patti Buchanan (Chair), Shirley Chatfield (Past Chair), Tony Gvora, Blain Thierry, Andrew Swan, Terry Dance-Bennink (Coordinator for Spiritual Companions Program and Stories United) and Moira Nasim (Council Liaison)  
**Staff Representatives:** Rev. Gai Burns, Rev. Gordon Cann and Ann Maffey  
**Meeting Days:** 2<sup>nd</sup> Monday of each month. **Meeting Time:** 9:30 am –11:30 am  
**# of meetings held:** 9 **Average attendance:** 6

### Highlights/Achievements of the Year:

- ✓ Two teams, Pastoral Care and Health and Wellness were combined and a new mandate developed.
- ✓ Program review was undertaken and a brainstorming meeting was held to set program priorities for 2008.
- ✓ An excellent evaluation of The Spiritual Companions Program was completed and approved by Council Executive to be forwarded to Presbytery.
- ✓ Stories United, Terry Dance-Bennink editor, a book containing the stories of our elders as told to their companions, was published by First†Metropolitan United Church. The book was officially launched in October and by yearend, sales of the book have covered the costs.
- ✓ A successful New Vistas lunch and discussion series was held in the spring of 2008.
- ✓ Ann Maffey continued to support Tai Chi, Yoga, Chronic Illness group and an Osteoporosis support group.
- ✓ Summer Strollers completed a 7<sup>th</sup> successful year of walks at Willows Beach with an increased number of participants. A yearend wrap up was held in October.
- ✓ Shirley Chatfield and Helen Mackay ably maintained the Church roster and a Visitation list averaging 75 individuals.
- ✓ Visits to homes, senior's facilities and hospital were coordinated and carried out by Gordon Cann and Ann Maffey with an average of 25 visits each per month. Gordon Cann and Blain Thierry offered Communion for those unable to come to Church. Spiritual Companions visit 15 elders regularly in this ongoing lay visitor program.

### Objectives for Coming Year:

- ✓ To work on a more coordinated plan for visiting those needing pastoral care.
- ✓ To provide a spiritual companions training program to church and community members.
- ✓ Terry Dance-Bennink and elders and companions will provide a workshop at Epiphany Explorations.
- ✓ To continue promoting and selling **Stories United, Terry Dance-Bennink, editor.**
- ✓ Ann Maffey will coordinate a New Vistas series in 2009.
- ✓ To introduce a spring session of movie afternoons for members of Summer Strollers Group.

Submitted by: Patti Buchanan

## HEALTH AND WELLNESS HEALING TOUCH REPORT FOR 2008

Healing Touch is a service provided by the Health and Wellness group specifically to the First†Metropolitan and the wider community of greater Victoria. Our hours of operation are from Noon to 6:00 PM on the hour every Monday except Holidays and some special events days when the facilities are not available to us usually due to building closure. The sessions are in room 225.

We have 22 healers available to us and approximately half of these do healing on a regular, i.e., weekly, biweekly or monthly basis. Our clients, also known as receivers, number approximately 53; they and the healers about one-half receive healing on a weekly, biweekly or monthly basis. The service is free of charge, though donations to the Health and Wellness Fund are appreciated.

Persons who have received healing have commented on how the healing has benefited them: "Awesome..." "The treatments gave me the energy to start baking again, something I had not had the energy to do for some time." "It lifts my spirits and allows me to do things with greater energy." "This gives me greater peace and helps me in so many ways." "I was always tired and somewhat depressed; healing touch gave me energy and the will to face life with a renewed sense of well being".

We invite the First†Met community to call Susan Walma to make an appointment for healing at 250-361-0964. Leave a message if she is not in at the time of your call and she will call you back as soon as she can. Alternately, for those who cannot for health or other reasons make it to the Monday sessions, appointments on an individual basis are available for in-hospital and if needed in-home visits. We do request that you try to make or cancel appointments on or before Saturday or Sunday at coffee time.

We at Healing Touch appreciate your interest in our service and hope that you will give us a try. You never know it may be just what you need to feel just that little bit better or more energetic. Let the Energy of God and the Universe help your day.

Submitted by: Susan Walma



## Hospitality Team

### Annual Report - 2008

#### Team Leader:

Moira Nasim (Interim)

#### Present Membership:

Irene Baddeley (Secretary), Shirley Bardy, Irene & Dick Bevan, Edie Faucher, Barb Lauder, Sheila MacDougall (Past Team Leader), Evelyn Moroz, Moira Nasim, Sharon Osmond, Elaine Reedhead, Shelley Servais, Lorrie & Warren Stirling, Elizabeth Thierry and Marie Warner

#### Meetings:

approx. 4-5 per year

#### Average Attendance:

8 - 10

#### Highlights/Achievements:

Though the Hospitality Team remained rudderless for part of last year, the team, structured in the following manner, continued nevertheless to share the many tasks that were so ably organized by our past leader, Sheila MacDougall.

- ✓ Kitchen Maintenance Coordinators: (Barb Lauder & Shirley Bardy)
- ✓ Purchasing Coordinator: (Sharon Osmond)
- ✓ Funeral Receptions Coordinator: (Elizabeth Thierry)
- ✓ CYYAF Events Coordinators: (Elaine Reedhead, Evelyn Moroz, Shelley Servais)
- ✓ Special Dietary Needs Coordinator: (Carol Newhouse)
- ✓ Special Events Coordinator: (vacant) Dry Cleaning Coordinators: (Irene & Dick Bevan)
- ✓ Epiphany Conference Coordinator: (Ed Oxamitny)
- ✓ Sunday Morning Refreshment Coordinator: (Moira Nasim – Interim)

In such a busy church as ours it takes many dedicated volunteers to fulfill all the many hospitality tasks that come our way in any given year. And certainly at First+Met we have found wonderful folks who have stepped forward this past year to help in many of the areas delineated above. **We do extend our deepest gratitude to each and every one of you for supporting us in this very important ministry.**

Noteworthy achievements and gifts that we would like particularly to lift up at this time are:

1. Our kitchens are now beautifully reorganized and in immaculate condition, thanks to the very hard work of Barb Lauder and Shirley Bardy, our kitchen coordinators (AKA the 'Ratatouilles').
2. New supplies have been purchased with kind support from our Stewardship funds.
3. Many offers of freshly baked goodies from our members have continued to appear on any given Sunday morning.
4. We give thanks to our Ministry, Admin and particularly our Custodial staff who have supported and continue to support our efforts in a myriad of ways.

#### Objectives for the Coming Year:

1. To continue to serve faithfully the hospitality needs at First+Metropolitan
2. To encourage more volunteers to join our team.
3. Offer a 'Food Safe' course sometime later in the spring.

Respectfully submitted: Moira Nasim (Hospitality Team Leader—Interim)

## Newcomers Welcoming Network

<b>Team Leader/Chair:</b>	Dave Osmond (Interim)
<b>Meeting Days:</b>	Varies
<b>Present Membership:</b>	CORE TEAM Laurie Simpson, Secretary; Beverley Cattrall (Ass't Secretary), Hiwot Nigussie, Renee White, Marie Warner, Merle Nicholds, Leslie Watson, Sharon Osmond (Luncheon Ass't) PLUS a roster of 30 Greeters & 8 Ushers
<b>Meeting Time:</b>	Varies
<b># of meetings held:</b>	6
<b>Average attendance:</b>	6

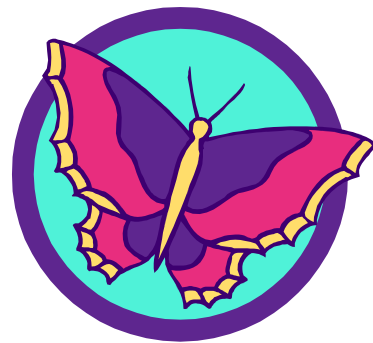
### Highlights & Achievements of the Year:

- Identified 97 resident Newcomers seeking a church home at First+Met.
- Two enjoyable Newcomers Luncheons where a total of 50 folks new to First+Met were introduced to church programs, leadership and staff and who shared their backgrounds and interests.
- Many of these Newcomers are now active in a variety of church programs – some even on the Newcomers Welcoming Network!
- Enlisted 2 new members to the Core Team and a few new Greeters.
- Have lost 2 veterans of the Core Team (Renee White & Laurie Simpson) and 6 Greeters.
- Special thanks to Laurie, our diligent and reliable Secretary over the past several years and to Renee who provided us with her infectious enthusiasm and energy.

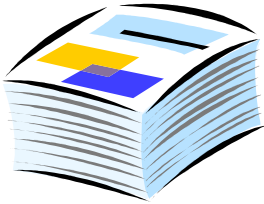
### Objectives for Coming Year:

- Identify and appoint new Team Leader.
- Fill one vacancy on Core Team and expand Greeters roster.
- Conduct at least two Newcomers Luncheons.
- Improve immediate follow-up with Newcomers.

Submitted by: Dave Osmond



## Communications Team



The Communications Team promotes Church events within our Church Family and to the rest of the Community. We meet approximately every two months, depending upon need. The new colour photo copier in the Church office has really helped us prepare more attractive material and reduce our costs.

Team members: Barry Rolston (Chair), Joan Mason (Vice Chair), David Bray, Brian Shields (Staff rep)

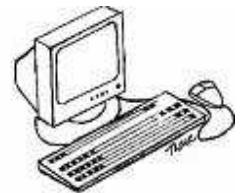
### How do we do this?

1. We promote Church events through Print Media (newspapers), including paid and Public Service Announcements and through the Electronic media (T.V., Cable, Radio etc)
2. We maintain and update our web page (thanks Joan!)
3. We have a membership with *Tourism Victoria* and regularly keep their site stocked with material.
4. We create or assist in the creation of flyers and posters.
5. We then promote Church events through the distribution of flyers or posters to about 60 site using our 'Distribution Tree', including the Tourist Bureau and Hotels/Motels (Thanks also to all who help here!) (about 60 sites). This includes flyers for "snowbirds" that are distributed in hotels, motels by Dick Bevan's team (*thanks Dick!*)
6. We update the bulletin boards in the Church and the large sign by our Quadra Street entrance (thanks Cullen!)
7. We improved our e mail distribution system (thanks Brian!)
8. We provided the large 'Celtic Cross' that is on the door to the Chapel and have assisted the Property Committee in providing ideas for improving the look of our 'Worship Foyer' (Concourse).
9. We continue to be interested in the "*Emerging Spirit*" campaign that targets the 30 - 45 demographic group, including assisting in the workshop held for our Presbytery last September at First†Met. Our adverts in the T/C paper promoting our Christmas events (in the *Leisure* section) were based upon suggested Emerging Spirit templates.



### Focus for 2009:

1. We are undertaking a major revision of our Web site so that it serves the Church and the Community even more effectively. More and more people are making contact with us via this medium.
2. We are recommending inside and outside improvements to the facility to the Property Committee that will make First†Met more 'friendly' to new people. This includes painting the Fellowship Hall Foyer. We will be providing new pictures, bulletin boards and signage to that area.
3. We are providing a new "Parking" sandwich board sign for the underground parking that will assist people coming to the 11:00 am service.



Every congregational member is in fact helping our Team by making others in the community aware of the many activities and services offered at First†Met. *Thank you for doing that.*

**Check out: [www.firstmetvictoria.com](http://www.firstmetvictoria.com)**

Submitted by: Barry Rolston (Chair)

## Library Committee Annual Report

**Team leader:** Denise Holmen  
**Meeting Days:** Sundays  
**Meeting Times:** 12:30 – 1:30 pm  
**# of meetings held:** 3  
**Average attendance:** 8 (of 10 current members)

### Highlights/Achievements of 2008:

- ✓ In May, David Chamberlin handed the committee chair position to Denise, but agreed to continue ordering new books, cataloguing them, and printing the catalogue.
- ✓ 184 books were borrowed. Committee members discussed ways to increase library use.
- ✓ David ordered and catalogued 110 books, 1 CD, and 12 audiocassettes. He created "Fast Read" labels for popular titles related to upcoming events like Epiphany Explorations.
- ✓ Phyllis Pond wrote library columns with book reviews for the Church newsletter until the Fall, when Susan Walma took over. David distributed a list of recent books to committee members so they could choose titles to review for the newsletter.
- ✓ David presented a short training session on the Dewey Decimal System, and Denise distributed summaries on how to write book reviews.
- ✓ Denise created and distributed pamphlets listing books by, or being discussed by, upcoming Epiphany Exploration speakers. It lists call numbers for books held by our Mountford Library, Queenswood Library, and the Greater Victoria Public Libraries.
- ✓ David and Denise weeded the collection to make room for new books.
- ✓ Denise and Jill Chamberlin held the Library's first book sale in the church hall after an 11:00 am service. Weeded and donated books are being sold to make money to buy new materials. Book donations were requested in the church bulletin.
- ✓ Phyllis Pond and Denise attended a Congregational Libraries Association meeting featuring a review of books on death, dying and funerals.
- ✓ Members hosted one after-church coffee hour.

### Objectives for the Coming Year:

- ✓ Designing library web pages for the church website
- ✓ Hosting the Congregational Libraries Association of BC meeting in February
- ✓ Expanding the library's audiovisual collection
- ✓ Printing a cumulative catalogue of library holdings
- ✓ Holding more book sales
- ✓ Hosting two after-church coffee hours

Submitted by: Denise Holmen

## **Women Exploring Spirituality 2008**

Comprises a group of women of various ages who gather once a month to study to deepen their faith and relationships to God.

Meetings are scheduled for the fourth Monday of each month September to June inclusive. There twenty three women registered with an average attendance of fifteen to eighteen.

The gathering begins with worship, music and prayer. A book provides material for reflection and discussion.

January 2008 we began a journey along the Camino in Spain with Joyce Rupp, by studying the book "Walk In a Relaxed Manner". Then in September 2008 to December we worked through a book by Paula Darcy, "The Gift of the Red Bird".

Many thanks to the group for their faithfulness and enthusiastic sharing of the material at hand and from their own experience.

Deep gratitude to Leona Aitken who has shared leadership in the worship and discussion. Also, to Jacque Henderson for her gift of music.

Gratefully Submitted: Rev. Colleen Erb and Leona Aitken (Facilitators)

## **First†Met Flower Arrangers Report for the 2008 Annual Report**

First†Met Flower Arrangers are a sub-group of the Worship Committee

2008 found the flower arrangers saddened by the passing of Diane Currie. Diane was a great asset to the floral beauty of First†Metropolitan Church.

There were 19 memorial arrangements this past year - seven more than usual. The arrangers are always pleased to do these arrangements using the flowers and the colours requested. We are also pleased to have the donor take their arrangement following the 11 o'clock service. This past year we tried to make it easier for our donors by doing the arrangements in one of our 'portable vases'. At this time I would like to thank all those that took their arrangements this way, and so promptly returned the vase.

At present there are seven flower arrangers. They are Diane Aitken, Jean Jenkins, Diana Jenks, Ethel Lett, Caryl Oja, Barbara Robertson and Marie Warner, plus, their treasurer, Agnes Lesyk. Each arranger works independently, following a pre-arranged schedule. They choose and buy the flowers for each Sunday and are later reimbursed for their expenses.

On September 6<sup>th</sup> 2008, the flower arrangers had their annual meeting at my home. I announced at that time that after many years of being on the flower team, it was time for me to 'retire'. I am now pleased to announce that the leadership of the First†Met Flower Arrangers will be taken over by Marie Warner. I wish to thank my team members for all of the support they have given me over the years. Also, I wish to thank Sharon MacDonald and Cullen Morton for their help.

Submitted respectively, Diana Jenks



## REPORT ON THE FIRST+METROPOLITAN STEWARDSHIP CAMPAIGN FOR 2008

Chair	Linden Holmen
Members	Expenditure officers have been appointed to evaluate applications for funds. They are Linden Holmen, Jan Drent and Allan Saunders. Herb Pitts is the Follow-up Director.
Meeting details	Meetings are held only to discuss applications for funding. The Follow-up Director consults with others during his preparation of periodic newsletters.

### Highlights of the Year

A three-year Stewardship Campaign was launched in 2007 and 2008 is the second year of the Campaign. To date, the Campaign has supported Church operations, the introduction of new programs and capital improvements. It also permitted hiring youth coordinators and a pastoral visitation minister.

Some financial highlights of the Campaign are presented below:

Total commitments	\$1,143,53
Total contributions to date (2007 and 2008), of which \$134,000 has been contributed by the Foundation	\$935,138
Commitments in 2008:	
• Budget enhancement	\$113,429
• Program expansion: program assistant: \$10,000; children’s choir: \$5,050; Our Place: \$10,000; printing of Stories United: \$7,000; ongoing activities of the Christian Spiritual Development Team: \$10,000;	\$42,050
• Capital improvements: miscellaneous items: \$19,500; increases to audio-visual capacity: \$10,200.	\$29,700
• Contributions to youth coordinators and pastoral visitation minister	\$51,000
• Total for 2008	\$236,179

### Objectives for the Coming Year

A review of contributions against commitments indicates that some households are not meeting their commitments. One objective is to encourage those who made commitments to keep them, if possible. Another objective is to encourage other households, including newcomers, to contribute to the Campaign in its last year. This objective is consistent with a major objective of the Campaign to have more people give to the Church.

Submitted by: Linden Holmen (Chair)

### Outreach Core Team Report 2008

Hunger has an appetite that can't be denied. It consumes self respect, swallows the spirit and feeds on indifference. For over 20 years First+Met has hosted a home cooked, sit down meal to the inner city family at the **Inner City Dinner**. It is our intention to be of service in a non judgmental, compassionate way.

**Out of the Rain Youth Emergency Shelter** has operated in inner city Victoria, November -April, for the past 11 years. First+Met is a charter member of the Coalition of faith-based and community organizations that provides homeless youth (ages 15-25) a warm, safe, dry environment to spend the night. Last year, First+Met welcomed more than 200 youth (an average of 16 youth and their pets per night) for one-night-a-week of shelter and two hot meals (supper and breakfast).

**Mission and Service** (M&S) has resurfaced in the life of our community here at First+Met this year as a priority. Supporting M&S is essential to supporting the work of the United Church, both here in Canada and abroad. Listen for our Minutes for Mission and ask about the work of M&S.

Each and every one of us can help make our city, our country and our world a better place for all of us to live. Simple decisions we make each day in how we live can make big differences.

Learning, listening, leading, laughing, living, leaping, lifestyles, local, liberating and loving.

Energy, climate change and ways to change or simplify our lifestyles are of primary concern to **KAIROS** and **Caring for Creation** members – composting, using dryer racks and clotheslines, using energy efficient light bulbs, recycling plastics are all ways we know how to make a smaller footprint on this planet.

Sending letters and signing petitions for **Amnesty International** (Canadian Section) has taken place several times this year at coffee time. We have written letters to many heads of Governments to stop torture and abuses to their citizens, both children and adult, by their own security forces and to release those imprisoned under unjust circumstances.

Solutions to overcoming poverty are long-term. Solutions to keeping active, making friends, sharing concerns about the world, and helping others are all at hand. Over 100 volunteers work actively with both the Out of the Rain and Inner City Dinner programs at First+Met to provide food, cook and assist in the kitchen, greeting, serving and clean up.

Not sure what a **STAND** is? Come out and **STAND** with some of us from Outreach and **Faith in Action (FIA)** at designated dates to peacefully and silently protest lack of housing, with only banners and wearing matching scarves, the message is simple Housing is a Human Right.

Everyone at a **Outreach** workshop last fall said they would like to see First+Met work along with other faith communities and the city to combat \_\_\_\_\_ and find solutions that fit for those in need. (clue to missing word – look at the first letter of each paragraph).

**Soroti** Uganda project was wrapped up, as planned in 2008. A decision by the founding nurses to hand over full operation of the clinic to the International Midwives Assoc. ensures that the clinic will continue. First+Met contributed \$20,000 to the project between 2005 and 2008.

So another year passes in the work of our church and we are ever so grateful for our community of caring people at First+Met. **Join us in being a Micah 6:8** church who is trying to act justly, to understand mercy and to find ways to walk humbly with our God.

**Outreach Chair:** Janet Gray  
**Team members:** Shirley Bardy, Tara Channell, Carol Fedrau-Ens, Sheila Hanna, Ron Hunter, Tom Lane, Helen MacKay, Maryanne Oximitny

Submitted by: Janet Gray (Outreach Chair)

## Our Place Society - 2008 ANNUAL REPORT

### Our Mission

Our Place Society (OPS) works in compassionate Christian love with those who are homeless and others in need to enrich and improve the lives of all. OPS, the Alliance of the *Open Door City Ministry* and the *Upper Room Society*, continues its three core activities – drop-in centre, transitional housing and meal service.

### Our Board of Directors

There were three resignations from the Board during 2008 (Elmarie Roberts, Dawn Williamson and Don Fletcher) and the addition of two new members (Susan Haddon and Donald Manning). The continuing Board members are Dennis Anholt (Chair), Linda Barry (Treasurer) Ruth Elvey, Paul Jenkins (Vice Chair), Bruce Jordan (Secretary), John Ronald (Past Chair), Michael Shepherd, Gordon Sloan and Donald Storch. Board members are volunteers too. We appreciate the contributions departing and current members have and will continue to make to our success.

### Overview

2008 was a year of unprecedented change and challenge for OPS. Also, it was a year of substantial accomplishment. Over the course of the year, our new building at 919 Pandora Avenue opened progressively.

Our first operations began in December 2007 and, by the time the official ribbon cutting ceremony was held on June 24<sup>th</sup>, 2008, all our programs and services were under one roof. The new facility provides over 40,000 square feet of highly functional, purpose-built space. Designed by Jensen Group Architects and constructed by Knappett Projects Inc., the building meets our needs and expectations extremely well.

The north-facing courtyard provides a welcoming entrance for over 600 Victoria citizens who visit each day we are open. This is a busy area where the family gathers on good weather days. Inside, in the bright, spacious, first floor drop-in centre, coffee and nutritious snacks are available. The centre provides a welcoming atmosphere in which to meet friends, pick up a book from the library, use a computer, and speak with one of OPS Outreach Workers.

Downstairs, one can take a shower, get a clean pair of socks or other clothing, play a game of pool or participate in one of the other recreations in the TV/Games room.

At lunch and dinner time, members of the Our Place family move to the second floor where an ever increasing number of people appreciate the nourishing meals served by the combination of OPS chefs and loyal, energetic volunteers.

On the top three floors are 45 residential rooms for men and women. These transitional housing rooms are occupied by people who, assisted by a support worker, are committed to developing a personal plan to assist them move on to more independent living.

Elsewhere throughout the building, programs, often developed by family members themselves, help improve employment and social skills. OPS is a very busy place. The staff and volunteers are constantly working to improve the lives of our family and the health and vitality of Victoria.

### **MAJOR DEVELOPMENTS AND ISSUES**

- ✓ The official Opening was held on June 22<sup>nd</sup>. It was attended by Minister Coleman, Mayor Lowe many dignitaries and dozens of staff, volunteers and family members.
- ✓ At the end of October, Reverend David Stewart retired after his long and valuable service to the Upper Room Society and OPS.
- ✓ OPS signed operating agreements between it and both the Victoria Presbytery of the United Church of Canada and the Upper Room Society.
- ✓ Usage of all our facilities, the drop-in centre, meal service and the Hygiene/Clothing section, increased significantly over the year.

- ✓ OPS operates five days a week, seven and a half hours a day. There is demand from the family and civic and provincial authorities for OPS to work longer hours. Optimally, this would be 7 days a week, 12 hours a day. This is well beyond our financial resources.
- ✓ The Society's financial year was changed from the calendar year to April-March in 2007. Financial statements for 2007-08 have been distributed. Copies of the 2008-09 statements will be in June 2009.
- ✓ The Board has initiated a review of the OPS strategic plan. It is expected to be finalized early 2009.
- ✓ OPS continues to work cooperatively with major community partners, especially the Victoria Coalition to End Homelessness, in addressing the issues of poverty and homelessness in our community. OPS, jointly with the Coalition and the Downtown Victoria Business Association, sponsored a seminar and luncheon at the Harbour Towers with Mr. Steve Snyder, CEO and President of TransAlta Corporation. Snyder was instrumental in the development of the Calgary 10 Year Plan to End Homelessness.

As always, we are extremely grateful to our employees and volunteers who give tirelessly to assist the needy of Victoria. We especially appreciate the generosity of all our donors, private and public, without whose support we would be unable to continue our work. The enthusiasm and support of the churches and members of the Victoria Presbytery of the United Church of Canada have, once again, been an inspiration.

Submitted by: Dennis M. Anholt, Ph.D. Board Chair

### Angel Gifts Project

**Team Leader/Chair:** Antoinette Warren, Our Place coordinator;  
Penny Bond, First+Metropolitan coordinator

#### Highlights/Achievements of the Year:

At Christmas time, 2008 this Victoria Presbytery project provided Angel Gifts to many inner city folk. Members of the First+Metropolitan congregation gave 83 gifts to members of the Our Place inner city family. While this was fewer than the goal of 95; nonetheless it was a very generous response, especially in the current uncertain economic times. Unfortunately, six gifts were not brought back and could not be traced.



Collecting and distributing the gifts presented special challenges this year as Victoria had its early snowfall during the week when the gifts needed to be brought back to First+Metropolitan, then transported to their next destinations. However, with some extra effort we were able to get all but two of the gifts to Our Place by the distribution date, with those remaining gifts arriving only two days later.

Thank you for the role you played in providing Angel Gifts this year. Your kindness and generosity are much appreciated. Special thanks go to Joyce & Peter Clugston, Susan Coulson, Terry Kirillo, Joan Mason and Marion Newson for their help with the sorting and distribution, especially as the snowfall meant that the "job descriptions" changed literally overnight. Also, many thanks to the First+Metropolitan office & custodial staff for their help in making this project run smoothly. There was a considerable influx of gifts to the church office after the snowfall, so special thanks go to Sharon for keeping track of these and keeping me informed.

#### Objectives for Coming Year:

- Provide at least 90 Angel Gifts from First+Metropolitan to Our Place
- Maintain volunteer participation of congregational members in the sorting and transportation of Angel Gifts

Submitted by: Penny Bond

## Margaret Cameron Trust Fund - 2008

### **MISSION:**

To receive and consider requests for help from this fund.

### **MEETINGS:**

As necessary to deal with incoming requests.

### **SIGNIFICANT ACTIVITIES:**

In August of 1990, the Trustees of Metropolitan United Church were advised that Metropolitan United Church was the beneficiary of the estate of a former member, Margaret Cameron. Her will instructed Canada Trust "TO SET ASIDE and to invest the residue of my estate as a Trust Fund to be designated as the "MARY ARCHIBALD, NELLIE AND MARGARET CAMERON MEMORIAL TRUST FUND." The income therefore shall be divided annually into five (5) equal parts and distributed as follows:

One (1) such equal part shall be paid to the METROPOLITAN UNITED CHURCH, 1411 Quadra Street, Victoria, British Columbia, to be used for people in need, including people who are not members of the Metropolitan United Church.

Because this was not a one-time bequest, but ongoing with definite direction on how to be used, the Trustees felt that it needed and deserved to be administered by its own committee.

In June 1991, Metropolitan Unified Board approved a committee to form the administration process, define the use of these funds and how these funds are to be looked after. On October 8, 1991 the committee report was presented at the Unified Board meeting and a motion was carried that "an ongoing Margaret Cameron Memorial Fund Committee be an administrative, decision-making committee for the purpose of receiving and/or seeking out requests for funds, awarding money as deemed appropriate and reporting to the congregation of Metropolitan United Church annually." A motion that the proceeds from the estate be deposited in Margaret Cameron Memorial Fund Committee was referred to the Board Executive, In March 1992, the Outreach Committee was appointed to administer the Margaret Cameron Memorial Fund.

In February 1994, the Margaret Cameron Memorial Fund Committee became a sub-committee of the Outreach Committee with all/most members being on the Outreach Committee and administration procedures established as follows:

1. All requests for aid from this fund must be in writing, to the Cameron Fund Committee, fully explaining the need.
2. All requests will be received, considered and approved by a carried motion by the committee.
3. Upon approval a requisition will be given to the treasurer of the Board of Trustees for the release of the approved funds.
4. Because of the sensitivity of request, it is imperative that confidentiality be maintained. Therefore, Margaret Cameron Trust Fund business will not appear in circulated minutes and reports, but will be confined to the Trust Fund Committee and the board of Trustees.

Miss Cameron's Memorial allows us to receive and consider requests for what would otherwise not be possible.

Submitted by: Pat Davey (Secretary)

## Music Committee Report for 2008

<b>Team Leader/Chair:</b>	Mona McGill
<b>Present Membership:</b>	Mona McGill – Chair Helen Carr, Secretary, Larry McGill, Treasurer Don Bourdon, Peter Clugston, Brenda Harvey, Don Hodgson, Mary Kenderdine, Helen Mackay, Dave Osmond, Sharon Stennes
<b>Meeting Days:</b>	2 <sup>nd</sup> Thursday of month
<b>Meeting times:</b>	2 or 6 pm
<b># of meetings held:</b>	8
<b>Average attendance:</b>	8
<b># of events held:</b>	14
<b>Average audience attendance at events excludes performers &amp; helpers:</b>	173

### Highlights/Achievements of the Year:

- ✓ **Music for Meditation:** What a wonderful way to begin the New Year! Denis Donnelly and Lanny Pollet provided us with music to quiet the mind and soothe the spirit. Each year the attendance increases with approximately 400 persons in 2008.
- ✓ **Navaro Franco Drumming Workshops,** Feb and May
- ✓ **Snowbirds:** Rebecca Haas Cabaret, Feb 20<sup>th</sup> at 7:00 pm, March 12 at 2:00 & 7:00 pm. This program was written and sung by Rebecca and revealed snippets of her musical career. It was light hearted, professionally executed and fun.
- ✓ **Bursary Recital:** April 19<sup>th</sup>. Our young students greatly appreciate the direction and leadership opportunities given to them by our Music Director. They also feel the warmth and support that comes from our congregation. This recital is their thank you to all for our support. The donations given at this recital go to support the bursary program.
- ✓ **Celtic Kitchen Party:** A fun event featuring a Celtic Fusion group from Ottawa along with local dancers. We were especially pleased to have young dancers from our neighbourhood school, St Andrews Elementary. These students and their teacher actually donated their time during summer holidays.
- ✓ **Kathaumiwx:** July 11<sup>th</sup> Ellerhein Girls' Choir from Estonia. A joy to host! The girls were exemplary ambassadors for Estonia. The Sanctuary was full and applause thundering.
- ✓ **Heritage Concert:** November 2<sup>nd</sup> "Tea with Sir James Douglas and Friends" gave one a peek into early Victoria and its music. It was researched by the music team, written by Edeana Malcolm, power point by Peter Clugston, and featured David Bray, Diana Keating, Herb Pitts with music by Sanctuary Choir and Linden Singers.
- ✓ **BC Bronze Bell Concert:** First†Met Bell Choir joined them to perform this Saturday evening concert.
- ✓ **Carols in the Candlelight:** Dec 23<sup>rd</sup> & 24<sup>th</sup>. Music filled the church and the presentation titled The Prince was adapted from a short story written by Oscar Wilde in 1888. Even with the inclement weather, these evenings were well attended and appreciated by those who came.

### Objectives for the Coming Year

- ✓ To support our strong church musical programming
- ✓ To reach out and continue to build ties with community

Submitted by: Mona McGill (Chair)

## Sanctuary Choir Annual Report 2008

**Team Leader/Chair:** Frances Pollet, Music Director  
**Present Membership:** Don Bourdon, President, Ted Weick, vice President  
Sheila Anderson, Treasurer, David Bray, Secretary  
Sylvia Green/Anne Walkey/Gordon Larsen, Librarians  
Joan Cunningham/Marlene Campbell, Gowns  
Ruby Lightbody, Membership  
Agnes Lesyk, Sick and Visiting  
**Meeting Days:** Thursday/Sunday  
**Meeting Time:** 7- 9 pm Thursday  
10:30 am—12:30 pm Sunday  
**# of meetings held:** 92  
**Average attendance:** 24

### Highlights/Achievements of the Year:

#### Musical Highlights:

- ✓ January 18-21 Epiphany Explorations
- ✓ March 21 Good Friday Service
- ✓ March 23 Easter Sunday Service
- ✓ November 2 BC 150th Heritage event with the Linden Singers: An Afternoon with Sir James Douglas and Friends
- ✓ December 23, 24 Carols in the Candlelight: The Prince
- ✓ December 28 Choral support for Emily Pollet's wedding

#### Activity Highlights:

- ✓ Music leadership at four Sunday services at Oak Bay Lodge
- ✓ Choral support for funeral/memorial services
- ✓ Choir fund donation to help with the Inner City dinner program
- ✓ Choir fund donation to the Open Door Choir
- ✓ Hosted congregational coffee time after church on June 22

#### Social Highlights:

- ✓ February 21 Social following our annual meeting and election of officers
- ✓ June 12 End-of-year potluck dinner hosted by Mona McGill
- ✓ November 20 Bridal shower for Emily Pollet

#### Objectives for Coming Year:

To continue to offer the choral component for Sunday services and provide leadership for congregational singing.

We continue to miss Diane Currie, who passed away in 2008, for her boundless inspiration and energy. We also miss Brenda Sober, who moved away in June, and her many years of service.

Thanks to Fran, Emily and Lanny Pollet for their leadership and enthusiasm. Thanks and appreciation also to our bursary students, soloists and instrumentalists who help add to our musical experience.

Respectfully submitted, David Bray (Secretary)

## Pringle Bells

<b>Leader:</b>	Frances Pollet, Director of Music
<b>Present Membership:</b>	11 plus Director
<b>Rehearsals:</b>	Friday mornings - Total 34; average attendance 11.
<b>Performances:</b>	Sunday services (morning) -3 Concert, Saturday evening -1

### Highlights of the Year:

1. Saturday evening concert with the BC Bronze Provincial Bell Choir and First†Met Vocal Ensemble. This was an outstanding occasion, enabling our Pringle Bells to rehearse and subsequently perform with an expert choir. The performance was enhanced by our Vocal Ensemble, providing a pleasant evening's listening for our audience. We also enjoyed the camaraderie of a pot-luck lunch during rehearsal!
2. Several members attended the annual weekend Spring Ring Handbell Workshop in Kelowna sponsored by the BC Guild of English Handbell Ringers (BCGEHR).
3. Our Director and 4 choir members attended a 1-day BCGEHR workshop in Nanaimo in April.
4. One member attended the National Handbell Workshop July 2 - 5 held in London, ON. Total attendance was about 230 ringers from across Canada.
5. The same member, Doris May, (also a member of our First†Met Sanctuary Choir) attended the week-long 13th. International Handbell Symposium in Orlando, FL, USA. There were over 850 bell ringers participating, representing countries from around the world. This International Symposium is held every 4 years; to be in England in 2012 and in Canada in 2016.



Submitted by: Don Duke

### Basketball

Leader/Chair: Rick Vickery  
 Meeting Days: Mon-Wed Present Membership:(120 youths and 20 coaches)  
 Meeting Time: 5-9  
 # of meetings held: 10  
 Average attendance: Teams



#### Highlights/Achievements of the Year:

We had a great enrollment with 10 teams, 6 boys teams and 4 girls (120 youth ages 8-17).

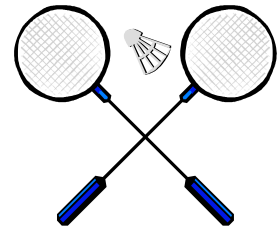
Our group is a diversified group with representation citywide. We are one of the only groups that accepts all comers. The league we belong to is the Victoria and District Basketball Association which consists of 130 teams, boys and girls ranging in age from 8-17 years old.

First+Met basketball now gives out 2 financial gifts for a deserving coach or player that is pursuing a post high school career. We also are one of the few basketball groups that has a windup banquet with 8 perpetual awards. Thanks to the church for your continued support of our group as I feel it is important to keep our young people involved in sports for a lasting benefit to them throughout there life.

Submitted by: Rick Vickery

### Badminton Annual Report 2008

Volunteer Coordinator: Carolyn Barton for Joan Wilkinson  
 Meeting Day: Monday  
 Meeting Time: 7:30pm  
 # of meetings held: Weekly September to June (not December)  
 Average attendance: 22 regular members & 13 drop ins



#### Highlights/Achievements of the Year:

- Fellowship & fun.

#### Objectives for Coming Year:

- Exercise, fun, & fellowship

Submitted by: Carolyn Barton for Joan Wilkinson - (Volunteer Coordinator)

### Friendship Club 2008

The Friendship Group continued to meet on the first and third Wednesday of the month except July and August.

We continue to meet the first Wednesday of the month at a restaurant for lunch at noon. On the third Wednesday we meet in the church for games such as dominos, whist and crib.

- We gathered at the Derbyshire's' for a Mother and Father Day Tea and again in October for a Thanksgiving Dinner.
- The Wilkinson's also hosted garden gathering in June.
- In July we met for lunch at the Ridge near Cadboro Bay Golf.
- In September we enjoyed a corn roast hosted by the Wilkinson's .
- In December Sharron and Keith Wilkinson hosted the group for a Christmas gathering including a delicious lunch. Thank you Sharron and Keith.

We try to keep in touch with members and former members as a sharing and caring activity. Cards are sent to members as required.

This year we lost a long term member, Stewart Maxwell. The Maxwell's were members since 1953.

Submitted by: Elwood Derbyshire

### Merry Mates 2008

The Club members meet the 1st Friday of every month. This past year we welcomed several new couples to our meeting's.

Sadly we all felt the loss of a long time member Ken Wright.

Due to some poor weather several of the planned programs had to be cancelled or re-scheduled for a later date.

- An interesting tour of "Our Place" took place in October.
- There was an evening with some of the First†Met Youth members, and parents, under Megumi Matsuo Saunders leadership, of their trip to Cuba.

We were able to provide some donations to the First†Met Youth and Kids and "Our Place", gained from the sale of the Entertainment Book.

Submitted by: Lillian Crozier-Smith (Secretary)

### Acti-Mets 2008

In 2008, the Acti-Mets modified the nature of our meetings and organization. We now meet for fellowship over lunch on the third Friday of every second month. Our meeting usually is at the Howard Johnson restaurant at Royal Oak, where people can choose from a selection of tasty lunch possibilities. We do enjoy one another's friendship and would welcome other seniors to join us. Any inquiries can be directed to either Ian McPherson or myself.

Submitted by: Gerry Walkey

## United Church Women

<b>Co-presidents:</b>	Joan Dowse/Marie McKee
<b>Secretary:</b>	Patti Buchanan
<b>Treasurer:</b>	Irene Bevan
<b>Corresponding Secretaries:</b>	Janet Harper/Kay Maguire
<b>Membership:</b>	41
<b>Associate Members:</b>	16
<b>Monthly Unit/Executive Meetings:</b>	ten months of the year



<b>Three Units:</b>	<b>Harmony Unit:</b>	rotating leaders
	<b>Mildred Mossop Unit:</b>	rotating leaders
	<b>Unity Unit: chair:</b>	Patti Buchanan

### Highlights/Achievements of the Year:

A worship service is the focus of each Executive and Unit meeting. This year the Women's Ministry Network of First†Metropolitan sponsored the Advent Ecumenical service in our Sanctuary. This was preceded by a time of fellowship, coffee and goodies in the Fellowship Hall. Invitations were sent to the wider Christian Community. The service was enjoyed by a good representation of a variety of groups.

The UCW supports and cares for the women within the UCW membership and also extends goodwill to all women of the Congregation.

Another function of the UCW is the continuing connection with the young children on the Cradle Roll. Birthday cards were sent to 25 children age 1 - 3. In addition, 50 cards were sent to UCW members on special occasions: 90th birthdays, get well messages, thinking of you and sympathy cards.

In 2008 the UCW supported two special projects to:

- ✓ An increase in the number of children sponsored to Camp Pringle
- ✓ Choir Bursary Fund

The UCW makes financial contributions:

- ✓ Children, Youth, Young Adult and Family Ministry
- ✓ First†Met Outreach Ministry
- ✓ Hospitality
- ✓ Health and Wellness Ministry
- ✓ M&S Fund
- ✓ Office: Paper and Duplicating
- ✓ The Kitchen at George Pringle Memorial Camp
- ✓ Sponsorships of children to attend summer programs at Camp Pringle
- ✓ UCW Presbyterial
- ✓ Presbyterial Projects Fund
- ✓ Registration for a Victoria Hospice/Healing Touch workshop
- ✓ The Flower Committee
- ✓ The Grace & Howley James Fund

- Christmas gifts were given to the First†Met staff who assist with the work of the UCW.
- In addition, UCW sent a donation to the "Grandmothers to Grandmothers Project" of the Stephen Lewis Foundation.
- Our fund raising in lieu of holding Bridge Luncheons, Teas, etc. was very successful.
- We support events of the Women's Inter-Church Council of Canada such the World Day of Prayer and the Least Coin Project. Many members attend and participate in these programs. First†Metropolitan members attend Presbyterial meetings four times each year. A Presbyterial highlight of the year is the June event at Camp Pringle - Day Apart.

Our members continue to share their knitting skills. We have given bags of knitting (socks, mitts, toques, little sweaters, and dishcloths) for the Knitters Group and Midwives in Africa to distribute.

One of the highlights for all units is producing, preparing, and selling of the Lenten Meditation book by the Mildred Mossop Unit. Many thanks go to those who participate by writing the meditations which have made the book the success it has been for fourteen years!

At Unit meetings there were varied programs such as Megumi Saunders and Jan White speaking about the Youth Cuba trip, UCW members sharing personal travel highlights, and Rev. Dr. Saunders talking about his trip to the Holy Land. Other topics such as Outreach concerns, and Solid Waste Management were discussed. Each Unit enjoyed a presentation by the Rev. Gai Burns. A Service of Remembrance was held by the Unity group. Special words of remembrance of members of Silver Stars and Unity who had passed away since 1998 were spoken by their friends. Joint Meetings were held to support the Least Coin project and a luncheon in support of M&S with Linda Hallett providing the program telling of her trip to Africa and the Grandmothers to Grandmothers project,

**Objectives for Coming Year:**

Rather than continuing to hold Teas or Bridge Luncheons, we are planning to continue with the special fund raising within each individual unit.

Submitted by: Marie McKee (Co-Chair)

### Board of Trustees 2008

<b>Team Leader/Chair:</b>	Jan Drent	<b>Vice Chair:</b>	Herb Pitts
<b>Meeting Days:</b>	Monday evenings	<b>Secretary:</b>	Andrea Swan
<b>Meeting Time:</b>	7:00 pm	<b>Other Members:</b>	John Newhouse, Wayne Carter,
<b># of meetings held:</b>	4		
<b>Average attendance:</b>	7		
<b>Designated Fund Treasurers:</b>			Leanne Prestwich, Rev. Allan Saunders
<b>Capital Projects:</b>			Herb Pitts
<b>Audio-Visual, Cameron Memorial, Cummings Trust, James Memorial, Music, Oliver Trust, Mayne Memorial:</b>			Robin Krause

#### Highlights/Achievements of the Year:

The Congregation appoints trustees to be responsible for "Real property" (land, and buildings) and "Personal property" (which includes money, investments, furniture and equipment). The trustees are responsible for arranging suitable insurance policies. The Church's operating fund - i.e. the current year finances - is the responsibility of the Council Executive. However, all other funds, i.e. long-term investments, are the responsibility of the trustees. The trustees look after eight "Designated Funds" (now termed the "Restricted Funds" in the Church's financial reports) which exist to support specific causes such as Audi-Visual equipment, Music, lay Christian education, etc. The trustees invest the money in these funds but decisions about spending are made by separate congregational committees for each of the designated funds. The trustees also serve as Directors of the FMUC Foundation - see following report.

Trustees are appointed by the Congregation at the Annual General Meeting. The minimum term of service as a trustee is three years with a normal term of six years. Extensions to eight years are possible. After that individuals may be re-appointed after retiring from the Board of Trustees for one year.

There were four meetings of the Board of Trustees during the year. We also had an informal meeting in August, to discuss how bequests to FMUC are allocated, and another on the same subject in November with Linden Holmen, Congregation Chair. Long-serving Trustees Len Jenks and Ralph Rodger completed their terms of service as of the Church AGM in March. The Congregation appointed three new trustees: Wayne Carter and Leanne Prestwich, along with Graham Aitken who unfortunately has since had to resign.

#### Objectives for Coming Year:

Continue to provide stewardship for the designated funds and to work with Council for the good of our Congregation.

Submitted by: Jan Drent (Chair)

## Foundation President's Report 2008



**President:** Jan Drent

**Secretary:** Andrea Swan

**Meeting Days:** Monday

**Treasurer, Memorial Stabilization**

**Meeting Time:** 7:30 pm

**Reserve:** John Newhouse

# of meetings: 4

**Treasurer, Memorial Endowment Fund:** Jan Drent

**Average Attendance:** 7

**Other Members:** Wayne Carter, Robin Krause, Herb Pitts  
Leanne Prestwich, Rev. Allan Saunders

### **Overview:**

There were three formal meetings of the Foundation over the past year (in March, October and November) in addition to the 6<sup>th</sup> AGM on June 24, 2008. We also had an informal discussion with a broker from RBC Dominion Securities about possibly vesting a portion of the funds with that firm (but have not followed through).

### **Trust Deeds:**

The Foundation holds the Church's trust funds. Under its constitution the FMUC Trustees are simultaneously the Directors of the Foundation. Work on combining the two former trust funds into a new single trust continues. In March the Memorial Endowment Fund was terminated as prescribed by its 1978 trust deed. The assets were transferred to a new "First† Metropolitan United Church Trust." Winding up the other old trust - the Memorial Stabilization Reserve-is more complicated as its original trust deed cannot be located. We applied to the Supreme Court of BC for approval to terminate the trust and transfer its assets to the new trust.

### **Financial:**

Investment earnings by the trust funds are used to further the work of the Church. They have grown over the years through receiving a portion of the bequests that are left to FMUC. Almost the entire investment earnings in 08 were remitted FMUC in December 2008 as the second of our three annual pledges of \$67,000 to the Stewardship Campaign. We also made other remittances to FMUC totaling \$ 5,000 and the remainder of our earnings were used for legal and accounting fees. We profit from the advice of our investment broker. During the year a portion of the funds in the MEF were invested in blue chip shares in accordance with our policy that up to 25% of investments could be in mutual funds and equities (shares); 21% of the overall trust funds are now earning in this way. The total holding in by the trust funds is \$ 1.84 Million, a decrease of 5.6% due to market turbulence from \$1.95 Million at the end of 2007.

### **Goals over the Next Year:**

1. Complete merging of the two old trust funds, establish investment advisory group.
2. Continue stewardship of the trust funds on behalf of the Congregation.

Submitted by: Jan Drent (President)

## George Pringle Memorial Camp Society—2008 Annual Report

<b>Chair: Tom Pringle</b>	Executive Director: Darryl MacLeod
<b>Board meetings:</b>	3 <sup>rd</sup> Thursday Monthly
<b>Membership:</b>	25 representing 15 of the 20 Victoria Presbytery churches
<b>Meeting Time:</b>	7:00 pm at St. Aidan's United Church
<b># of meetings held:</b>	9 meetings with an average attendance of 12

### Highlights/Achievements of the Year:

#### Program:

Due in part to a job market that saw many employers hiring youth ages 14+, we saw significant drops in our leadership training programs and youth volunteers. We also saw reduced numbers for our family oriented camps in 2008. Overall, our summer camper numbers were 592 which is close to our average numbers, but down significantly from 2007.

Our Spring Break Camp attracted 34 participants and these numbers continue to grow each year.

There was at least one camper from each of 15 of the 20 Victoria Presbytery Churches who attended our summer programs.

#### Property:

- ✓ The camp was being used a total of 264 days (72%)
- ✓ Several projects were completed in 2008. These were:
- ✓ The replacement of 3 sections of our docks
- ✓ The building of a contemplation platform in our swamp land
- ✓ Screens were installed on all the cabin windows
- ✓ The donation and installation of a beautiful bench in memory of Dana O'Dowd by her husband John
- ✓ The replacement of the Laura Butler roof shingles with metal roofing
- ✓ We also purchased all of our challenge courses from Pinnacle Pursuits Inc.

#### Budget:

Camp Pringle receipts were just over the expenditures in 2008 with an overall budget of just over \$450,000.

#### Other:

- ✓ 8 of 20 Victoria Presbytery Churches booked the camp for at least one retreat/event in addition to the Presbyterian UCW, and the BC Conference Youth.
- ✓ 2008 saw the passing of Ron Welch, past Finance Director, to cancer. He will be missed.
- ✓ Our longest standing member of the board, Bob McKee, resigned from active involvement after over 50 years with the camp. Thank you for everything Bob.

#### Objectives for 2009:

In conjunction with the BC Conference Camp Futures Project Team, to create a solid redevelopment plan of the camp facilities.

We would like to thank all the churches and the Victoria Presbytery for your continued support. You are our cornerstone.

**Society Directors 2008**

<b>Chair</b>	<i>Tom Pringle</i>
<b>Vice-Chair</b>	<i>Jim Upright</i>
<b>Secretary</b>	<i>Jean Grimshaw</i>
<b>Property Director</b>	<i>Bob French</i>
<b>Personnel Director</b>	<i>Bob McKee</i>
<b>Program Director</b>	<i>Caroline Van Es</i>
<b>Finance Director</b>	<i>Jake Jakubowski</i>
<b>Long Range Planning Director</b>	<i>Peter Van Es</i>
<b>Presbytery Representative</b>	<i>Murray Groom</i>
<b>Nominations</b>	<i>Vacant</i>
<b>Public Affairs and Promotions</b>	<i>Vacant</i>

**Society Members 2008**

<b>At Large</b>	<i>Mark Duncan</i>
<b>Brentwood/Shady</b>	<i>Jake Jakubowski</i>
<b>Cadboro Bay</b>	<i>Colin Landells</i>
<b>Centennial</b>	<i>Jean Grimshaw</i>
<b>Cordova Bay</b>	<i>Avis Michalovsky</i>
	<i>Tom Pringle</i>
	<i>Caroline Van Es</i>
	<i>Peter Van Es</i>
<b>Duncan</b>	<i>Leighton Mellemstrand</i>
<b>Esquimalt</b>	<i>Kim Clarkson</i>
<b>First/Met</b>	<i>Mary Jean Krawciw</i>
	<i>Barry Morson</i>
	<i>Bob McKee</i>
	<i>Bernie Osborne</i>
	<i>Jan Drent</i>
<b>Garden City</b>	<i>Don Nicholas</i>
<b>Gordon</b>	<i>Michelle Maze</i>
	<i>Ron Welch</i>
<b>Gordon Head</b>	<i>Marion Fields</i>
<b>Oak Bay</b>	<i>Anne Lyle</i>
<b>Pilgrim</b>	<i>Bob French</i>
<b>St. Aidan's</b>	<i>Jim Upright</i>
<b>St. John's</b>	<i>Arden Irving</i>
<b>Sylvan</b>	<i>Doug Collis</i>
	<i>Murray Groom</i>

<b>Staff</b>	<b>Executive Director</b>	<i>Darryl MacLeod</i>
	<b>Property Managers</b>	<i>Richard &amp; Penny Pope</i>

## **REPORT OF THE UVIC CAMPUS MINISTRY TO THE ANNUAL MEETINGS OF VICTORIA PRESBYTERY CONGREGATIONS 2009**

Today the Martlet, the UVic student newspaper, was interviewing students about their opinions of an upcoming Campus Ministry forum entitled 'Tough Questions for Religions.' This four part UVic forum will address the secularist challenge to religion by asking questions such as: "What makes religions go bad? Are religions inherently violent? Do religions discriminate against women? Are religions mutually exclusive?" The Martlet was motivated to publish an article because the topics will create a bit of a buzz and controversy attracts interest. Panelists from diverse religious traditions will be responding with honesty and forthrightness with the goal of opening dialogue and fostering a deeper understanding about the place of religion in society. This is one of the ways campus ministry fulfills its mandate to be in partnership with people from other faith traditions, by engaging students to think more deeply about the complexity of our religious traditions and to offer resources for spiritual learning and growth.

But this is only a small part of the outreach work of campus ministry. Through Meditation groups, Centering Prayer retreats, prayer in the style of Taize services, Labyrinth retreats and Healing Touch workshops, students learn the 'praxis' of faith by developing skills that help them open their hearts and minds to God's presence. Last year over 400 students participated in these activities.

We also nurture a student faith community. Helping United Church students stay connected with one another through facebook, through student meals, activities in local congregations and special events nurtures a sense of church community. In this context, the campus minister offers pastoral care, spiritual friendship, and opportunities to recognize and celebrate Christ's presence in our lives.

Finally, the campus ministry offers opportunity for students to 'live in respect with creation' through 8-week discussion groups examining personal lifestyle choices with a focus on living more simply and creating sustainable communities. A significant transformative experience for many students have been the Sacred Ecology retreats that explore in depth God's gift of Creation and our place in it.

Historically, this multifaceted ministry has been funded through the Mission & Service fund, B.C. Conference, Victoria Presbytery, Congregations and individual donations. Due to a major reduction in Mission and Service funds, the UVic campus Ministry will face a \$20,000 reduction in Mission Support for 2010 and beyond. The Campus Ministry Board is examining options for the future funding of campus ministry at UVic., including fund-raising activities. Our first fund-raiser in 2009 will be an event with Gospel choir director Brian Tate, who will be leading a workshop for choir members and all who love to sing, February 28 and March 1.

Please direct any questions or feedback to Henri Lock, United Church chaplain at UVic, [hlock@uvic.ca](mailto:hlock@uvic.ca) or 250-472-4159. Website: [www.uvic.ca/interfaith](http://www.uvic.ca/interfaith).

Submitted by: Henri Lock

## THE GORGE VIEW SOCIETY ~ 2008 ANNUAL REPORT

The Women's Association of Vancouver Island (now the UCW Presbyterial) first sponsored the idea to provide affordable housing for low income senior citizens in 1955. Their initial seed money was \$776. Four years later, land had been acquired with the help of Victoria City Mayor and Council; money came in from bequests, donations, United Church and Provincial Government, and the Right Rev. Angus J. MacQueen—Moderator of the UCC at the time—officiated at the turning of the first sod.

In her Report to Presbytery on September 16<sup>th</sup>, 1959, Chairman Bertha Parsons spoke of the first building erected on the site, which was housing two married couples and four single persons. "Fully modern quarters" were provided at a rental of \$25 per month for single suites and \$35 per month for couples.

In the 50 years since that report, GVS has continued to build on its 5 acre site and now houses 81 singles and 18 couples in fourteen buildings. Rents continue to be well below Victoria averages at \$259-\$270 for single accommodation and \$466 or less for couples' suites. One suite is set aside as a Hospitality Suite for visiting friends and family: nightly rental is \$20.

Currently, all those who apply cannot be immediately housed and a substantial Waiting List is maintained. The need for continued housing such as that provided by The Gorge View Society is even more evident as our seniors find their savings dwindle in these hard economic times.

In 1959, the Society was looking for the funding for the second block to be built.

In 2008, the Society was approved through the Rental Rehabilitation Assistance Project through the Canadian Mortgage and Housing Corp. which supports affordable housing through forgivable loans for upgrading older facilities such as ours. Of the eligible buildings (all but the three newest), significant upgrades have been made possible: baseboard heaters were replaced with more efficient convection heaters; 80 suites got new metal entrance doors; crawl spaces were re-insulated to R28; flat shed roofs were converted to sloped and integrated into existing rooflines; three buildings were converted to circulating hot water; four buildings were re-roofed; and 80 suites had new thermopane windows installed. Still to come are the new bathroom exhaust fans and kitchen range hoods (replacing very old wall/ceiling fans) with new vent ducting.

As suites become vacant, additional upgrades of carpet, countertops, faucets and plumbed-in showers and tub surrounds are undertaken.

The Society members have worked hard throughout the years to continue with the original vision of growth through building. Recently, a more active role in the Organization of United Church Homes (OUCH) has been undertaken—the current GVS Chair, Gladys Lavenne, chaired the June meeting in St. John's, Nfld. Through this affiliation, 56 faith-based organizations nation-wide are supporting each other and defining their continuing connections as Incorporated Ministries of the United Church of Canada. As such, the GVS will also be responsible for maintaining inspection standards as set by OUCH.

The Gorge View Society draws 100% of its Board Members from United Churches within Victoria Presbytery. In the past, we have enjoyed representation from all of the congregations in the Greater Victoria area—most counting their service in terms of decades! As these dedicated and valued members have had to step down, the Society is rebuilding its Board structure, both in numbers as well as in policies and procedures that will standardize its operation for the next fifty years.

At this time, we appeal to all local congregations to appoint a representative to our Society. We ask for those who have relevant skills and passion for an Incorporated Ministry providing affordable housing for seniors 55+. If this work is to continue, we need committed Society members willing to take on roles in finance/treasurer, communication, property, admissions and other areas as we create a new vision for The Gorge View Society.

Submitted by: Jane Louie (Administrator)

### **Report for Victoria Presbytery—2008**

2008 saw some changes in the leadership of various pastoral charges. We have been very fortunate in the leadership - Allan Saunders, as Chair of Presbytery, has compassionately and efficiently dealt with some interesting issues that have arisen. He has been blessed with good support and guidance on the Executive and with the addition of Terry Harrison as the Conference minister.

There have been changes in the pastoral charges throughout Victoria Presbytery. Wendy Read has gone as an Interim minister to Esquimalt United, Alana Menu has been called to Centennial United, Greg Darjes has left Garden City United as of December 31, Anne Manikel has been appointed interim minister to Lake Cowichan, and Selma Sheldon has been filling in at St. Aidan's due to illness of a minister. Our own ministerial staff has diminished due to the departure of Gonzalo Duarte and the ongoing illness of Gai Burns.

Presbytery continues to support the various charges and to vision regarding the many social justice issues - homelessness, First Nations issues, M&S support, U Victoria chaplaincy, youth and young adult support. We have an excellent representative in Emma Prestwich. Presbytery also actively supports Camp Pringle, Our Place and the Gorge View Society.

It has, indeed, been an interesting year. We are looking forward to 2009.

Submitted by: Jane Louie, Helen Mackay

This page is blank.