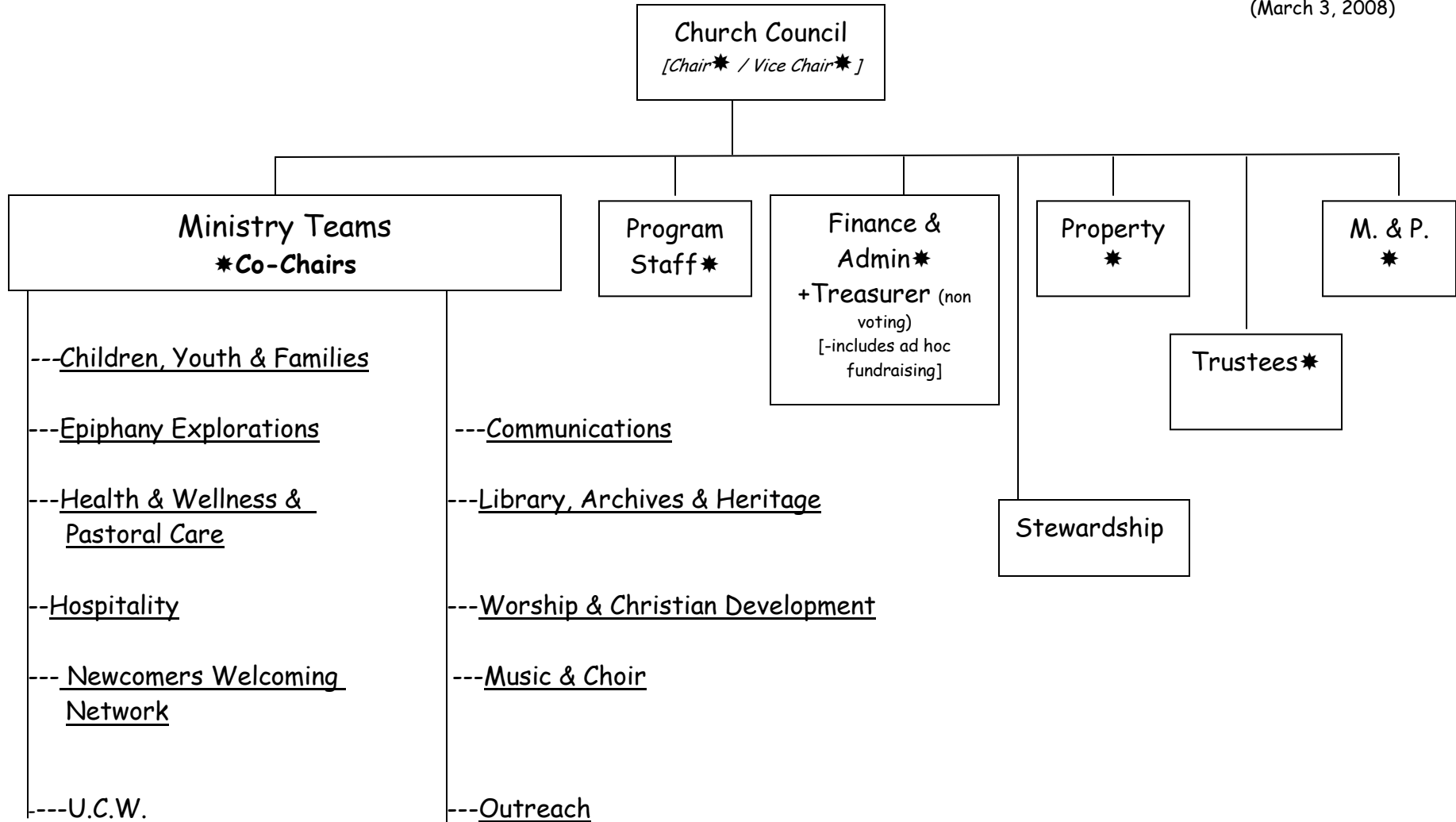


First ☩ Metropolitan United Church - Governance

(March 3, 2008)



Note: **Council Executive** acts as a support to Council and the Congregation, assisting in the day to day management of the Church, meeting monthly or as required. It also includes a Chair and Vice Chair elected separately by the Congregation. Lay representatives to Presbytery are also members of Council. Members are noted by an star(*) above(one*/vote).

The Church **Council** is composed of the Council Executive and leaders of all of the teams and formal Committees, and meets approximately four times a year.